

A8867

Leader in Biomolecular Solutions for Life Science



## RPIA Rabbit pAb

Catalog No.: A8867

### Basic Information

#### Observed MW

33kDa

#### Calculated MW

33kDa

#### Category

Polyclonal Antibody

#### Applications

WB,IHC-P,ELISA

#### Cross-Reactivity

Human,Mouse,Rat

### Background

The protein encoded by this gene is an enzyme, which catalyzes the reversible conversion between ribose-5-phosphate and ribulose-5-phosphate in the pentose-phosphate pathway. This gene is highly conserved in most organisms. The enzyme plays an essential role in the carbohydrate metabolism. Mutations in this gene cause ribose 5-phosphate isomerase deficiency. A pseudogene is found on chromosome 18.

### Recommended Dilutions

**WB** 1:200 - 1:1000

**IHC-P** 1:50 - 1:200

**ELISA** Recommended starting concentration is 1 µg/mL. Please optimize the concentration based on your specific assay requirements.

### Immunogen Information

#### Gene ID

22934

#### Swiss Prot

P49247

#### Immunogen

Recombinant protein (or fragment). This information is considered to be commercially sensitive.

#### Synonyms

RPI; RPIAD; RPIA

### Contact



[www.abclonal.com](http://www.abclonal.com)

### Product Information

#### Source

Rabbit

#### Isotype

IgG

#### Purification

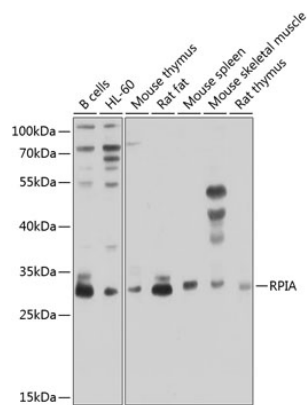
Affinity purification

#### Storage

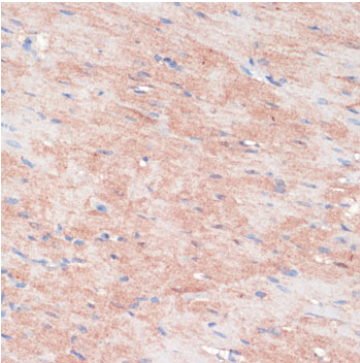
Store at -20°C. Avoid freeze / thaw cycles.

Buffer: PBS with 0.02% sodium azide, 50% glycerol, pH7.3.

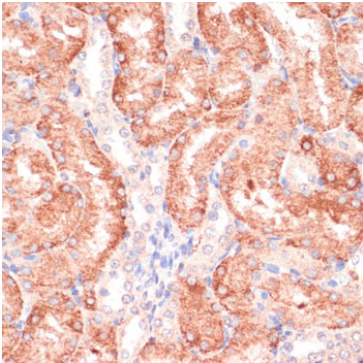
Validation Data



Western blot analysis of various lysates using RPIA Rabbit pAb (A8867) at 1:1000 dilution.  
Secondary antibody: HRP-conjugated Goat anti-Rabbit IgG (H+L) (AS014) at 1:10000 dilution.  
Lysates/proteins: 25µg per lane.  
Blocking buffer: 3% nonfat dry milk in TBST.  
Detection: ECL Enhanced Kit (RM00021).  
Exposure time: 30s.



Immunohistochemistry analysis of paraffin-embedded Rat heart using RPIA Rabbit pAb (A8867) at dilution of 1:100 (40x lens). Microwave antigen retrieval performed with 0.01M PBS Buffer (pH 7.2) prior to IHC staining.



Immunohistochemistry analysis of paraffin-embedded Rat kidney using RPIA Rabbit pAb (A8867) at dilution of 1:100 (40x lens). Microwave antigen retrieval performed with 0.01M PBS Buffer (pH 7.2) prior to IHC staining.