

A8840

Leader in Biomolecular Solutions for Life Science



CPB1 Rabbit pAb

Catalog No.: A8840

Basic Information

Observed MW

40kDa

Calculated MW

47kDa

Category

Polyclonal Antibody

Applications

WB,IF/ICC,FC

Cross-Reactivity

Human

Background

Three different procarboxypeptidases A and two different procarboxypeptidases B have been isolated. The B1 and B2 forms differ from each other mainly in isoelectric point.

Carboxypeptidase B1 is a highly tissue-specific protein and is a useful serum marker for acute pancreatitis and dysfunction of pancreatic transplants. It is not elevated in pancreatic carcinoma.

Recommended Dilutions

WB	1:500 - 1:1000
IF/ICC	1:20 - 1:50
FC	1:20 - 1:50

Immunogen Information

Gene ID

1360

Swiss Prot

P15086

Immunogen

A synthetic Peptide of human CPB1

Synonyms

CPB; PASP; PCPB; CPB1

Contact



www.abclonal.com

Product Information

Source

Rabbit

Isotype

IgG

Purification

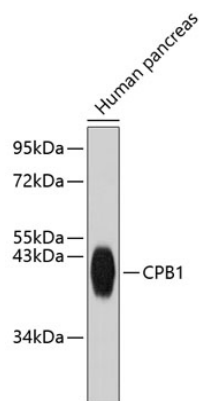
Affinity purification

Storage

Store at 4°C. Avoid freeze / thaw cycles.

Buffer: PBS with 0.02% sodium azide,pH7.3.

Validation Data



Western blot analysis of extracts of human pancreas, using CPB1 antibody (A8840).
Secondary antibody: HRP Goat Anti-Rabbit IgG (H+L) (A5014) at 1:10000 dilution.
Lysates/proteins: 25µg per lane.
Blocking buffer: 3% nonfat dry milk in TBST.