

A8829

Leader in Biomolecular Solutions for Life Science



MAGEA4 Rabbit pAb

Catalog No.: A8829

Basic Information

Observed MW

40kDa

Calculated MW

35kDa

Category

Polyclonal Antibody

Applications

WB

Cross-Reactivity

Human

Background

This gene is a member of the MAGEA gene family. The members of this family encode proteins with 50 to 80% sequence identity to each other. The promoters and first exons of the MAGEA genes show considerable variability, suggesting that the existence of this gene family enables the same function to be expressed under different transcriptional controls. The MAGEA genes are clustered at chromosomal location Xq28. They have been implicated in some hereditary disorders, such as dyskeratosis congenita. Several variants encoding the same protein have been found for this gene.

Recommended Dilutions

WB 1:200 - 1:2000

Immunogen Information

Gene ID

4103

Swiss Prot

P43358

Immunogen

A synthetic Peptide of human MAGEA4

Synonyms

CT1.4; MAGE4; MAGE4A; MAGE4B; MAGE-41; MAGE-X2; MAGEA4

Contact



www.abclonal.com

Product Information

Source

Rabbit

Isotype

IgG

Purification

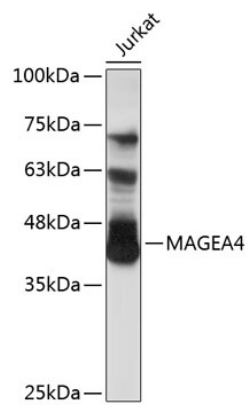
Affinity purification

Storage

Store at 4°C. Avoid freeze / thaw cycles.

Buffer: PBS with 0.02% sodium azide, pH7.3.

Validation Data



Western blot analysis of extracts of Jurkat cells, using MAGEA4 antibody (A8829).
Secondary antibody: HRP Goat Anti-Rabbit IgG (H+L) (A5014) at 1:10000 dilution.
Lysates/proteins: 25µg per lane.
Blocking buffer: 3% nonfat dry milk in TBST.