

A8767

Leader in Biomolecular Solutions for Life Science



## GRAP2 Rabbit pAb

Catalog No.: A8767

### Basic Information

#### Observed MW

38kDa

#### Calculated MW

38kDa

#### Category

Polyclonal Antibody

#### Applications

WB,ELISA

#### Cross-Reactivity

Human,Mouse

### Background

This gene encodes a member of the GRB2/Sem5/Drk family. This member is an adaptor-like protein involved in leukocyte-specific protein-tyrosine kinase signaling. Like its related family member, GRB2-related adaptor protein (GRAP), this protein contains an SH2 domain flanked by two SH3 domains. This protein interacts with other proteins, such as GRB2-associated binding protein 1 (GAB1) and the SLP-76 leukocyte protein (LCP2), through its SH3 domains. Multiple alternatively spliced transcript variants encoding distinct isoforms have been found for this gene.

### Recommended Dilutions

WB 1:500 - 1:2000

### Immunogen Information

#### Gene ID

9402

#### Swiss Prot

O75791

#### Immunogen

Recombinant fusion protein containing a sequence corresponding to amino acids 1-330 of human GRAP2 (NP\_004801.1).

#### Synonyms

P38; GADS; GRID; GRPL; GrbX; Mona; GRB2L; GRBLG; Grf40; GRAP-2; GRAP2

### Contact



[www.abclonal.com](http://www.abclonal.com)

### Product Information

#### Source

Rabbit

#### Isotype

IgG

#### Purification

Affinity purification

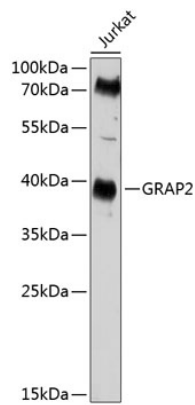
#### Storage

Store at -20°C. Avoid freeze / thaw cycles.

Buffer: PBS with 0.02% sodium azide,50% glycerol,pH7.3.

## Validation Data

---



Western blot analysis of lysates from Jurkat cells, using GRAP2 Rabbit pAb (A8767) at 1:1000 dilution.

Secondary antibody: HRP Goat Anti-Rabbit IgG (H+L) (AS014) at 1:10000 dilution.

Lysates/proteins: 25µg per lane.

Blocking buffer: 3% nonfat dry milk in TBST.

Detection: ECL Basic Kit (RM00020).

Exposure time: 20s.