

A8750

Leader in Biomolecular Solutions for Life Science



TAX1BP3 Rabbit pAb

Catalog No.: A8750

Basic Information

Observed MW

14kDa

Calculated MW

14kDa

Category

Polyclonal Antibody

Applications

WB,ELISA

Cross-Reactivity

Human,Mouse

Background

This gene encodes a small, highly conserved protein with a single PDZ domain. PDZ (PSD-95/Discs large/ZO-1 homologous) domains promote protein-protein interactions that affect cell signaling, adhesion, protein scaffolding, and receptor and ion transporter functions. The encoded protein interacts with a large number of target proteins that play roles in signaling pathways; for example, it interacts with Rho A and glutaminase L and also acts as a negative regulator of the Wnt/beta-catenin signaling pathway. This protein was first identified as binding to the T-cell leukaemia virus (HTLV1) Tax oncoprotein. Overexpression of this gene has been implicated in altered cancer cell adhesion, migration and metastasis. The encoded protein also modulates the localization and density of inwardly rectifying potassium channel 2.3 (Kir2.3). To date, this protein has been shown to play a role in cell proliferation, development, stress response, and polarization. Alternative splicing results in multiple transcript variants encoding distinct isoforms.

Recommended Dilutions

WB 1:500 - 1:2000

ELISA Recommended starting concentration is 1 µg/mL. Please optimize the concentration based on your specific assay requirements.

Immunogen Information

Gene ID

30851

Swiss Prot

O14907

Immunogen

Recombinant protein (or fragment). This information is considered to be commercially sensitive.

Synonyms

TIP1; TIP-1; TAX1BP3

Contact

 www.abclonal.com

Product Information

Source

Rabbit

Isotype

IgG

Purification

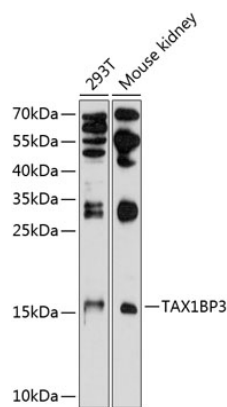
Affinity purification

Storage

Store at -20°C. Avoid freeze / thaw cycles.

Buffer: PBS with 0.02% sodium azide, 50% glycerol, pH7.3.

Validation Data



Western blot analysis of various lysates using TAX1BP3 Rabbit pAb (A8750) at 1:1000 dilution.
Secondary antibody: HRP-conjugated Goat anti-Rabbit IgG (H+L) (AS014) at 1:10000 dilution.
Lysates/proteins: 25µg per lane.
Blocking buffer: 3% nonfat dry milk in TBST.
Detection: ECL Basic Kit (RM00020).
Exposure time: 90s.