

A8675

Leader in Biomolecular Solutions for Life Science



LAT2 Rabbit pAb

Catalog No.: A8675

Basic Information

Observed MW

30kDa

Calculated MW

27kDa

Category

Polyclonal Antibody

Applications

WB

Cross-Reactivity

Human

Background

This gene is one of the contiguous genes at 7q11.23 commonly deleted in Williams syndrome, a multisystem developmental disorder. This gene consists of at least 14 exons, and its alternative splicing generates 3 transcript variants, all encoding the same protein.

Recommended Dilutions

WB 1:500 - 1:1000

Immunogen Information

Gene ID

7462

Swiss Prot

Q9GZY6

Immunogen

A synthetic Peptide of human LAT2

Synonyms

LAB; NTAL; WSCR5; WBSCR5; HSPC046; WBSCR15; LAT2

Contact



www.abclonal.com

Product Information

Source

Rabbit

Isotype

IgG

Purification

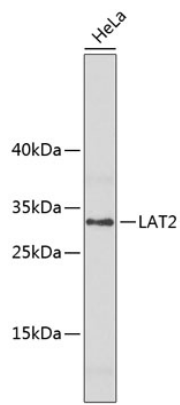
Affinity purification

Storage

Store at 4°C. Avoid freeze / thaw cycles.

Buffer: PBS with 0.02% sodium azide, pH 7.3.

Validation Data



Western blot analysis of extracts of HeLa cells, using LAT2 antibody (A8675).
Secondary antibody: HRP Goat Anti-Rabbit IgG (H+L) (AS014) at 1:10000 dilution.
Lysates/proteins: 25µg per lane.
Blocking buffer: 3% nonfat dry milk in TBST.