

A8542

Leader in Biomolecular Solutions for Life Science



# DLG1 Rabbit pAb

Catalog No.: A8542 **4 Publications**

## Basic Information

### Observed MW

114kDa

### Calculated MW

100kDa

### Category

Polyclonal Antibody

### Applications

WB,IF/ICC,ELISA

### Cross-Reactivity

Human,Mouse,Rat

## Background

This gene encodes a multi-domain scaffolding protein that is required for normal development. This protein may have a role in septate junction formation, signal transduction, cell proliferation, synaptogenesis and lymphocyte activation. A multitude of transcript variants deriving from alternative splicing and the use of multiple alternate promoter have been observed, including some splice variants that may be specific to brain and other tissues. An upstream uORF may regulate translation at some splice variants of this gene.

## Recommended Dilutions

**WB** 1:500 - 1:2000

**IF/ICC** 1:50 - 1:200

**ELISA** Recommended starting concentration is 1 µg/mL. Please optimize the concentration based on your specific assay requirements.

## Immunogen Information

### Gene ID

1739

### Swiss Prot

Q12959

### Immunogen

Recombinant protein (or fragment). This information is considered to be commercially sensitive.

### Synonyms

hdlg; DLGH1; SAP97; SAP-97; DLG1

## Contact

 [www.abclonal.com](http://www.abclonal.com)

## Product Information

### Source

Rabbit

### Isotype

IgG

### Purification

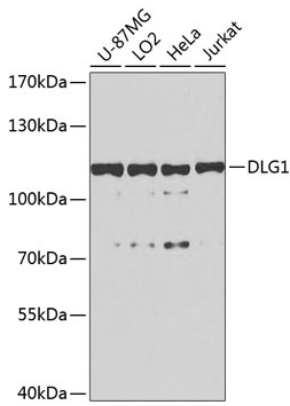
Affinity purification

### Storage

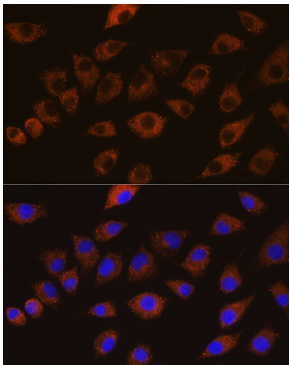
Store at -20°C. Avoid freeze / thaw cycles.

Buffer: PBS containing 50% glycerol, preserved with proclin300 or sodium azide (as specified on the Certificate of Analysis), pH 7.3.

## Validation Data



Western blot analysis of various lysates using DLG1 Rabbit pAb (A8542) at 1:1000 dilution.  
Secondary antibody: HRP-conjugated Goat anti-Rabbit IgG (H+L) (AS014) at 1:10000 dilution.  
Lysates/proteins: 25µg per lane.  
Blocking buffer: 3% nonfat dry milk in TBST.  
Detection: ECL Basic Kit (RM00020).  
Exposure time: 90s.



Immunofluorescence analysis of L929 cells using DLG1 Rabbit pAb (A8542) at dilution of 1:100 (40x lens).  
Secondary antibody: Cy3-conjugated Goat anti-Rabbit IgG (H+L) (AS007) at 1:500 dilution. Blue: DAPI for nuclear staining.