

A8493

Leader in Biomolecular Solutions for Life Science



# REV1 Rabbit pAb

Catalog No.: A8493 **1 Publications**

## Basic Information

### Observed MW

145kDa

### Calculated MW

138kDa

### Category

Polyclonal Antibody

### Applications

WB, ELISA

### Cross-Reactivity

Human

## Background

This gene encodes a protein with similarity to the *S. cerevisiae* mutagenesis protein Rev1. The Rev1 proteins contain a BRCT domain, which is important in protein-protein interactions. A suggested role for the human Rev1-like protein is as a scaffold that recruits DNA polymerases involved in translesion synthesis (TLS) of damaged DNA.

## Recommended Dilutions

WB 1:500 - 1:2000

## Immunogen Information

### Gene ID

51455

### Swiss Prot

Q9UBZ9

### Immunogen

Recombinant fusion protein containing a sequence corresponding to amino acids 120-345 of human REV1 (NP\_057400.1).

### Synonyms

REV1L; AIBP80; REV1

## Contact



[www.abclonal.com](http://www.abclonal.com)

## Product Information

### Source

Rabbit

### Isotype

IgG

### Purification

Affinity purification

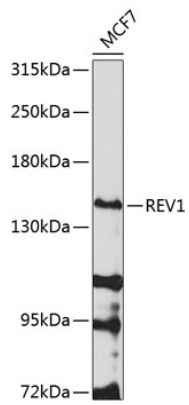
### Storage

Store at -20°C. Avoid freeze / thaw cycles.

Buffer: PBS with 0.02% sodium azide, 50% glycerol, pH 7.3.

## Validation Data

---



Western blot analysis of extracts of MCF-7 cells, using REV1 antibody (A8493) at 1:1000 dilution.  
Secondary antibody: HRP Goat Anti-Rabbit IgG (H+L) (AS014) at 1:10000 dilution.  
Lysates/proteins: 25 $\mu$ g per lane.  
Blocking buffer: 3% nonfat dry milk in TBST.  
Detection: ECL Basic Kit (RM00020).  
Exposure time: 30s.