

A8423

Leader in Biomolecular Solutions for Life Science



GNG10 Rabbit pAb

Catalog No.: A8423

Basic Information

Observed MW

14kDa

Calculated MW

7kDa

Category

Polyclonal Antibody

Applications

WB,ELISA

Cross-Reactivity

Human,Mouse,Rat

Background

Predicted to enable G-protein beta-subunit binding activity. Predicted to be involved in G protein-coupled receptor signaling pathway. Predicted to be located in plasma membrane. Predicted to be part of heterotrimeric G-protein complex.

Recommended Dilutions

WB 1:500 - 1:2000

ELISA Recommended starting concentration is 1 µg/mL. Please optimize the concentration based on your specific assay requirements.

Immunogen Information

Gene ID

2790

Swiss Prot

P50151

Immunogen

Recombinant protein (or fragment). This information is considered to be commercially sensitive.

Synonyms

GNG10

Contact



www.abclonal.com

Product Information

Source

Rabbit

Isotype

IgG

Purification

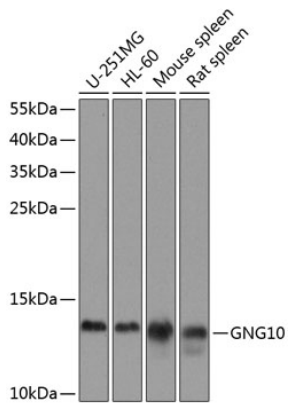
Affinity purification

Storage

Store at -20°C. Avoid freeze / thaw cycles.

Buffer: PBS containing 50% glycerol, preserved with proclin300 or sodium azide (as specified on the Certificate of Analysis), pH 7.3.

Validation Data



Western blot analysis of various lysates using GNG10 Rabbit pAb (A8423) at 1:1000 dilution.
Secondary antibody: HRP-conjugated Goat anti-Rabbit IgG (H+L) (AS014) at 1:10000 dilution.
Lysates/proteins: 25µg per lane.
Blocking buffer: 3% nonfat dry milk in TBST.
Detection: ECL Basic Kit (RM00020).
Exposure time: 90s.