

A8360

Leader in Biomolecular Solutions for Life Science



SFI1 Rabbit pAb

Catalog No.: A8360

Basic Information

Observed MW

148kDa

Calculated MW

148kDa

Category

Polyclonal Antibody

Applications

WB,ELISA

Cross-Reactivity

Human

Background

Enables phosphatase binding activity. Predicted to be located in cytosol.

Recommended Dilutions

WB 1:500 - 1:2000

ELISA Recommended starting concentration is 1 µg/mL. Please optimize the concentration based on your specific assay requirements.

Immunogen Information

Gene ID

9814

Swiss Prot

A8K8P3

Immunogen

Recombinant protein (or fragment). This information is considered to be commercially sensitive.

Synonyms

PISD; hSfi1p; PPP1R139; SFI1

Contact



www.abclonal.com

Product Information

Source

Rabbit

Isotype

IgG

Purification

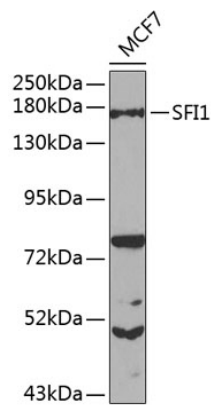
Affinity purification

Storage

Store at -20°C. Avoid freeze / thaw cycles.

Buffer: PBS with 0.02% sodium azide, 50% glycerol, pH7.3.

Validation Data



Western blot analysis of lysates from MCF-7 cells, using SFI1 Rabbit pAb (A8360) at 1:1000 dilution.
Secondary antibody: HRP-conjugated Goat anti-Rabbit IgG (H+L) (AS014) at 1:10000 dilution.
Lysates/proteins: 25µg per lane.
Blocking buffer: 3% nonfat dry milk in TBST.
Detection: ECL Basic Kit (RM00020).
Exposure time: 5s.