

A8359

Leader in Biomolecular Solutions for Life Science



PPP6R2 Rabbit pAb

Catalog No.: A8359

Basic Information

Observed MW

105kDa

Calculated MW

105kDa

Category

Polyclonal Antibody

Applications

WB,ELISA

Cross-Reactivity

Human

Background

The protein encoded by this gene is a regulatory protein for the protein phosphatase-6 catalytic subunit. Together, these proteins act as a significant T-loop phosphatase for Aurora A, an essential mitotic kinase. Loss of function of either the regulatory or catalytic subunit of protein phosphatase-6 interferes with spindle formation and chromosome alignment.

Recommended Dilutions

WB 1:500 - 1:2000

ELISA Recommended starting concentration is 1 µg/mL. Please optimize the concentration based on your specific assay requirements.

Immunogen Information

Gene ID

9701

Swiss Prot

O75170

Immunogen

Recombinant protein (or fragment). This information is considered to be commercially sensitive.

Synonyms

PP6R2; SAPS2; SAP190; KIAA0685; PPP6R2

Contact

 www.abclonal.com

Product Information

Source

Rabbit

Isotype

IgG

Purification

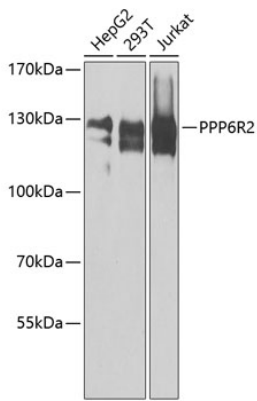
Affinity purification

Storage

Store at -20°C. Avoid freeze / thaw cycles.

Buffer: PBS containing 50% glycerol, preserved with proclin300 or sodium azide (as specified on the Certificate of Analysis), pH 7.3.

Validation Data



Western blot analysis of various lysates using PPP6R2 Rabbit pAb (A8359) at 1:1000 dilution.
Secondary antibody: HRP-conjugated Goat anti-Rabbit IgG (H+L) (AS014) at 1:10000 dilution.
Lysates/proteins: 25µg per lane.
Blocking buffer: 3% nonfat dry milk in TBST.
Detection: ECL Enhanced Kit (RM00021).
Exposure time: 10s.