

A8354

Leader in Biomolecular Solutions for Life Science



## XPC Rabbit pAb

Catalog No.: A8354 **1 Publications**

### Basic Information

#### Observed MW

130kDa

#### Calculated MW

106kDa

#### Category

Polyclonal Antibody

#### Applications

WB,IHC-P,IP,ELISA

#### Cross-Reactivity

Human

### Background

The protein encoded by this gene is a key component of the XPC complex, which plays an important role in the early steps of global genome nucleotide excision repair (NER). The encoded protein is important for damage sensing and DNA binding, and shows a preference for single-stranded DNA. Mutations in this gene or some other NER components can result in Xeroderma pigmentosum, a rare autosomal recessive disorder characterized by increased sensitivity to sunlight with the development of carcinomas at an early age. Alternatively spliced transcript variants have been found for this gene.

### Recommended Dilutions

**WB** 1:500 - 1:2000

**IHC-P** 1:50 - 1:200

**IP** 0.5µg-4µg antibody for  
200µg-400µg extracts  
of whole cells

**ELISA** Recommended starting  
concentration is 1  
µg/mL. Please optimize  
the concentration  
based on your specific  
assay requirements.

### Immunogen Information

#### Gene ID

7508

#### Swiss Prot

Q01831

#### Immunogen

Recombinant protein (or fragment). This information is considered to be commercially sensitive.

#### Synonyms

XP3; RAD4; XPCC; p125; XPC

### Product Information

#### Source

Rabbit

#### Isotype

IgG

#### Purification

Affinity purification

#### Storage

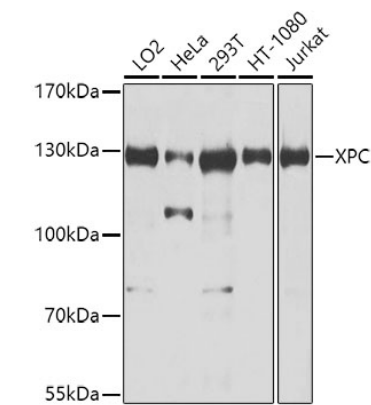
Store at -20°C. Avoid freeze / thaw cycles.

Buffer: PBS with 0.02% sodium azide, 50% glycerol, pH7.3.

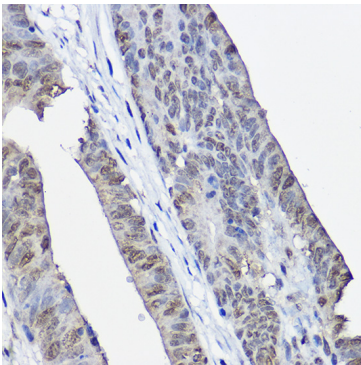
### Contact

 [www.abclonal.com](http://www.abclonal.com)

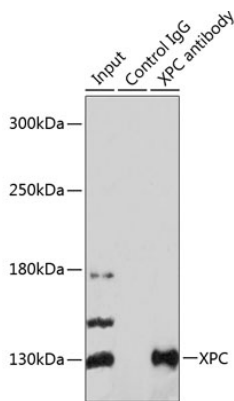
Validation Data



Western blot analysis of various lysates using XPC Rabbit pAb (A8354) at 1:1000 dilution.  
Secondary antibody: HRP-conjugated Goat anti-Rabbit IgG (H+L) (AS014) at 1:10000 dilution.  
Lysates/proteins: 25µg per lane.  
Blocking buffer: 3% nonfat dry milk in TBST.  
Detection: ECL Enhanced Kit (RM00021).  
Exposure time: 5s.



Immunohistochemistry analysis of paraffin-embedded Human colon carcinoma using XPC Rabbit pAb (A8354) at dilution of 1:100 (40x lens). High pressure antigen retrieval performed with 0.01M Citrate buffer (pH 6.0) prior to IHC staining.



Immunoprecipitation analysis of 200 µg extracts of 293T cells using 3 µg XPC antibody (A8354). Western blot was performed from the immunoprecipitate using XPC antibody (A8354) at a dilution of 1:1000.