

A8352

Leader in Biomolecular Solutions for Life Science



# RPN2 Rabbit pAb

Catalog No.: A8352 **3 Publications**

## Basic Information

### Observed MW

69kDa

### Calculated MW

69kDa

### Category

Polyclonal Antibody

### Applications

WB,ELISA

### Cross-Reactivity

Human,Mouse,Rat

## Background

This gene encodes a type I integral membrane protein found only in the rough endoplasmic reticulum. The encoded protein is part of an N-oligosaccharyl transferase complex that links high mannose oligosaccharides to asparagine residues found in the Asn-X-Ser/Thr consensus motif of nascent polypeptide chains. This protein is similar in sequence to the yeast oligosaccharyl transferase subunit SWP1. Alternatively spliced transcript variants encoding different isoforms have been found for this gene.

## Recommended Dilutions

WB 1:500 - 1:2000

## Immunogen Information

### Gene ID

6185

### Swiss Prot

P04844

### Immunogen

Recombinant fusion protein containing a sequence corresponding to amino acids 360-540 of human RPN2 (NP\_002942.2).

### Synonyms

SWP1; RPNII; RIBIIR; RPN-II; RPN2

## Contact



[www.abclonal.com](http://www.abclonal.com)

## Product Information

### Source

Rabbit

### Isotype

IgG

### Purification

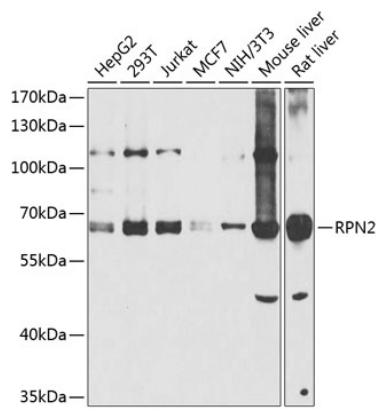
Affinity purification

### Storage

Store at -20°C. Avoid freeze / thaw cycles.

Buffer: PBS with 0.02% sodium azide,50% glycerol,pH7.3.

## Validation Data



Western blot analysis of extracts of various cell lines, using RPN2 antibody (A8352) at 1:1000 dilution.  
Secondary antibody: HRP Goat Anti-Rabbit IgG (H+L) (AS014) at 1:10000 dilution.  
Lysates/proteins: 25µg per lane.  
Blocking buffer: 3% nonfat dry milk in TBST.  
Detection: ECL Basic Kit (RM00020).  
Exposure time: 60s.