

A8335PM

Leader in Biomolecular Solutions for Life Science



## [KD Validated] cGAS Rabbit PolymAb®

Catalog No.: A8335PM

### Basic Information

---

**Observed MW**

62kDa

**Calculated MW**

59kDa

**Category**

SMab Recombinant Monoclonal  
Antibody

**Applications**

WB,IHC-P,IF/ICC,ELISA

**Cross-Reactivity**

Human,Mouse,Rat

### Background

---

Enables several functions, including 2',3'-cyclic GMP-AMP synthase activity; chromatin binding activity; and phosphatidylinositol-4,5-bisphosphate binding activity. Involved in several processes, including cellular response to exogenous dsRNA; positive regulation of intracellular signal transduction; and regulation of defense response. Located in several cellular components, including cytosol; nucleus; and site of double-strand break.

### Recommended Dilutions

---

**WB** 1:12000 - 1:52000

**IHC-P** 1:200 - 1:800

**IF/ICC** 1:200 - 1:800

**ELISA** Recommended starting concentration is 1 µg/mL. Please optimize the concentration based on your specific assay requirements.

### Immunogen Information

---

**Gene ID**

115004

**Swiss Prot**

Q8N884

**Immunogen**

A synthetic peptide corresponding to a sequence within amino acids 1-501 of human CGAS (NP\_612450.2).

**Synonyms**

MB21D1; h-cGAS; C6orf150

### Product Information

---

**Source**

Rabbit

**Isotype**

IgG

**Purification**

Affinity purification

**Storage**

Store at -20°C. Avoid freeze / thaw cycles.

Buffer: PBS with 0.09% Sodium azide,0.05% BSA,50% glycerol,pH7.3.

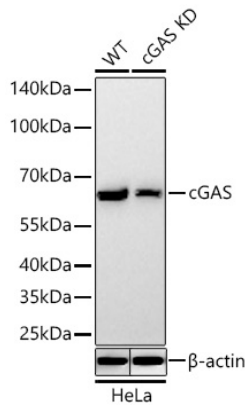
### Contact

---



[www.abclonal.com](http://www.abclonal.com)

## Validation Data



Western blot analysis of lysates from wild type (WT) and cGAS knockdown (KD) HeLa cells using [KD Validated] cGAS Rabbit PolymAb® (A8335PM) at 1:12000 dilution incubated at room temperature for 1.5 hours.

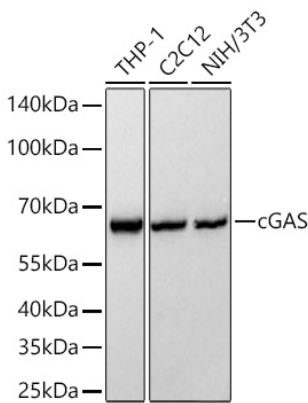
Secondary antibody: HRP-conjugated Goat anti-Rabbit IgG (H+L) (AS014) at 1:10000 dilution.

Lysates/proteins: 30 µg per lane.

Blocking buffer: 3% nonfat dry milk in TBST.

Detection: ECL Basic Kit (RM00020).

Exposure time: 10s.



Western blot analysis of various lysates using [KD Validated] cGAS Rabbit PolymAb® (A8335PM) at 1:12000 dilution incubated at room temperature for 1.5 hours.

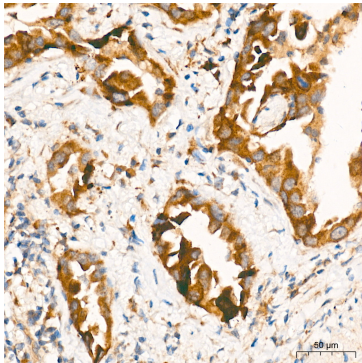
Secondary antibody: HRP-conjugated Goat anti-Rabbit IgG (H+L) (AS014) at 1:10000 dilution.

Lysates/proteins: 30 µg per lane.

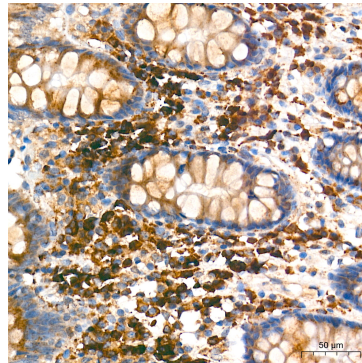
Blocking buffer: 3% nonfat dry milk in TBST.

Detection: ECL Basic Kit (RM00020).

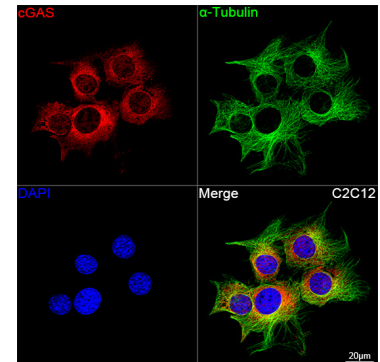
Exposure time: 10s.



Immunohistochemistry analysis of paraffin-embedded Human lung cancer tissue using [KD Validated] cGAS Rabbit PolymAb® (A8335PM) at a dilution of 1:600 (40x lens). High pressure antigen retrieval performed with 0.01M Tris-EDTA Buffer (pH 9.0) prior to IHC staining.

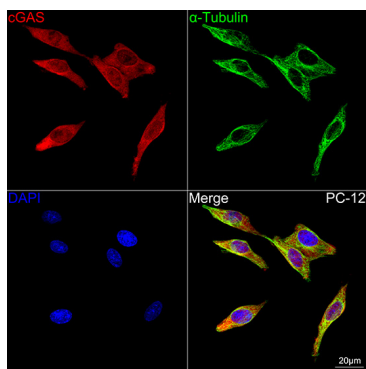


Immunohistochemistry analysis of paraffin-embedded Human colon tissue using [KD Validated] cGAS Rabbit PolymAb® (A8335PM) at a dilution of 1:600 (40x lens). High pressure antigen retrieval performed with 0.01M Tris-EDTA Buffer (pH 9.0) prior to IHC staining.

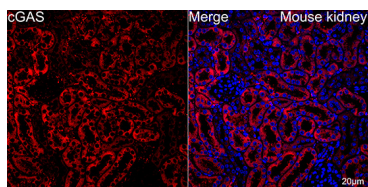


Confocal imaging of C2C12 cells using [KD Validated] cGAS Rabbit PolymAb® (A8335PM, dilution 1:200) followed by a further incubation with Cy3 Goat Anti-Rabbit IgG (H+L) (AS007, dilution 1:500) (Red). The cells were counterstained with α-Tubulin Mouse mAb (AC012, dilution 1:400) followed by incubation with ABflo® 488-conjugated Goat Anti-Mouse IgG (H+L) Ab (AS076, dilution 1:500) (Green). DAPI was used for nuclear staining (Blue). Objective: 100x.

## Validation Data



Confocal imaging of PC-12 cells using [KD Validated] cGAS Rabbit PolymAb® (A8335PM, dilution 1:200) followed by a further incubation with Cy3 Goat Anti-Rabbit IgG (H+L) (AS007, dilution 1:500) (Red). The cells were counterstained with  $\alpha$ -Tubulin Mouse mAb (AC012, dilution 1:400) followed by incubation with ABflo® 488-conjugated Goat Anti-Mouse IgG (H+L) Ab (AS076, dilution 1:500) (Green). DAPI was used for nuclear staining (Blue). Objective: 100x.



Confocal imaging of paraffin-embedded Mouse kidney tissue using [KD Validated] cGAS Rabbit PolymAb® (A8335PM, dilution 1:200) followed by a further incubation with Cy3 Goat Anti-Rabbit IgG (H+L) (AS007, dilution 1:500) (Red). DAPI was used for nuclear staining (Blue). High pressure antigen retrieval performed with 0.01M Citrate Buffer (pH 6.0) prior to IF staining. Objective: 40x.