

A8317

Leader in Biomolecular Solutions for Life Science



CEP44 Rabbit pAb

Catalog No.: A8317 **1 Publications**

Basic Information

Observed MW

45kDa

Calculated MW

44kDa

Category

Polyclonal Antibody

Applications

WB,ELISA

Cross-Reactivity

Human,Mouse

Background

Enables microtubule binding activity. Involved in centriole replication and centriole-centriole cohesion. Located in centriole; centrosome; and spindle pole.

Recommended Dilutions

WB 1:500 - 1:2000

Immunogen Information

Gene ID

80817

Swiss Prot

Q9C0F1

Immunogen

Recombinant fusion protein containing a sequence corresponding to amino acids 1-280 of human CEP44 (NP_001035247.1).

Synonyms

PS1TP3; KIAA1712; CEP44

Contact



www.abclonal.com

Product Information

Source

Rabbit

Isotype

IgG

Purification

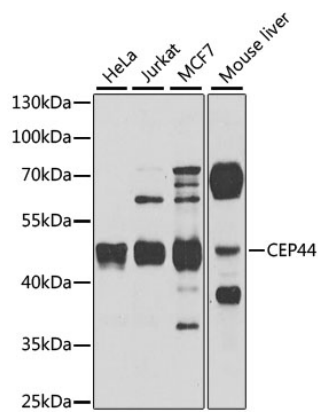
Affinity purification

Storage

Store at -20°C. Avoid freeze / thaw cycles.

Buffer: PBS with 0.02% sodium azide,50% glycerol,pH7.3.

Validation Data



Western blot analysis of extracts of various cell lines, using CEP44 antibody (A8317) at 1:1000 dilution.
Secondary antibody: HRP Goat Anti-Rabbit IgG (H+L) (AS014) at 1:10000 dilution.
Lysates/proteins: 25µg per lane.
Blocking buffer: 3% nonfat dry milk in TBST.
Detection: ECL Basic Kit (RM00020).
Exposure time: 60s.