

A8262

Leader in Biomolecular Solutions for Life Science



CCDC92 Rabbit pAb

Catalog No.: A8262 **1 Publications**

Basic Information

Observed MW

37kDa

Calculated MW

37kDa

Category

Polyclonal Antibody

Applications

WB,ELISA

Cross-Reactivity

Human

Background

Enables identical protein binding activity. Located in centriole; centrosome; and nucleoplasm.

Recommended Dilutions

WB 1:500 - 1:2000

Immunogen Information

Gene ID

80212

Swiss Prot

Q53HC0

Immunogen

Recombinant fusion protein containing a sequence corresponding to amino acids 1-331 of human CCDC92 (NP_001291889.1).

Synonyms

CCDC92

Contact

 www.abclonal.com

Product Information

Source

Rabbit

Isotype

IgG

Purification

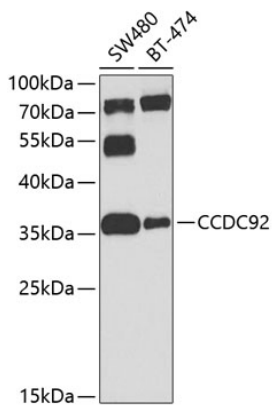
Affinity purification

Storage

Store at -20°C. Avoid freeze / thaw cycles.

Buffer: PBS with 0.02% sodium azide,50% glycerol,pH7.3.

Validation Data



Western blot analysis of extracts of various cell lines, using CCDC92 antibody (A8262) at 1:1000 dilution.

Secondary antibody: HRP Goat Anti-Rabbit IgG (H+L) (AS014) at 1:10000 dilution.

Lysates/proteins: 25µg per lane.

Blocking buffer: 3% nonfat dry milk in TBST.

Detection: ECL Basic Kit (RM00020).

Exposure time: 60s.