

A8229

Leader in Biomolecular Solutions for Life Science



# CEP55 Rabbit pAb

Catalog No.: A8229

## Basic Information

### Observed MW

60kDa

### Calculated MW

54kDa

### Category

Polyclonal Antibody

### Applications

WB,IF/ICC,ELISA

### Cross-Reactivity

Human,Mouse,Rat

## Background

Enables identical protein binding activity. Involved in cranial skeletal system development; establishment of protein localization; and midbody abscission. Acts upstream of or within mitotic cytokinesis. Located in Flemming body; centriolar satellite; and plasma membrane. Implicated in multinucleated neurons, anhydramnios, renal dysplasia, cerebellar hypoplasia and hydranencephaly.

## Recommended Dilutions

**WB** 1:500 - 1:2000

**IF/ICC** 1:50 - 1:200

**ELISA** Recommended starting concentration is 1 µg/mL. Please optimize the concentration based on your specific assay requirements.

## Immunogen Information

### Gene ID

55165

### Swiss Prot

Q53EZ4

### Immunogen

Recombinant fusion protein containing a sequence corresponding to amino acids 1-260 of human CEP55 (NP\_060601.3).

### Synonyms

CT111; MARCH; URCC6; C10orf3; CEP55

## Contact



[www.abclonal.com](http://www.abclonal.com)

## Product Information

### Source

Rabbit

### Isotype

IgG

### Purification

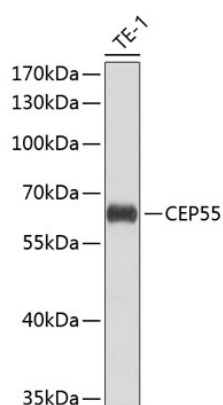
Affinity purification

### Storage

Store at -20°C. Avoid freeze / thaw cycles.

Buffer: PBS with 0.02% sodium azide,50% glycerol,pH7.3.

## Validation Data



Western blot analysis of lysates from THP-1 cells, using CEP55 Rabbit pAb (A8229) at 1:1000 dilution.

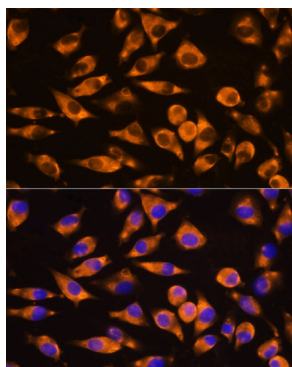
Secondary antibody: HRP-conjugated Goat anti-Rabbit IgG (H+L) (AS014) at 1:10000 dilution.

Lysates/proteins: 25µg per lane.

Blocking buffer: 3% nonfat dry milk in TBST.

Detection: ECL Basic Kit (RM00020).

Exposure time: 15s.



Immunofluorescence analysis of L929 cells using CEP55 Rabbit pAb (A8229) at dilution of 1:100. Secondary antibody: Cy3-conjugated Goat anti-Rabbit IgG (H+L) (AS007) at 1:500 dilution. Blue: DAPI for nuclear staining.