

A8225

Leader in Biomolecular Solutions for Life Science



SEMA4C Rabbit pAb

Catalog No.: A8225

Basic Information

Observed MW

110kDa

Calculated MW

93kDa

Category

Polyclonal Antibody

Applications

WB, ELISA

Cross-Reactivity

Human, Mouse

Background

Predicted to enable chemorepellent activity and semaphorin receptor binding activity. Involved in muscle cell differentiation and positive regulation of stress-activated MAPK cascade. Located in extracellular space.

Recommended Dilutions

WB 1:500 - 1:2000

ELISA Recommended starting concentration is 1 µg/mL. Please optimize the concentration based on your specific assay requirements.

Immunogen Information

Gene ID

54910

Swiss Prot

Q9C0C4

Immunogen

Recombinant protein (or fragment). This information is considered to be commercially sensitive.

Synonyms

SEMAF; SEMAI; SEMACL1; M-SEMA-F; SEMA4C

Contact



www.abclonal.com

Product Information

Source

Rabbit

Isotype

IgG

Purification

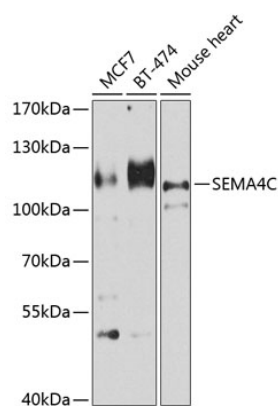
Affinity purification

Storage

Store at -20°C. Avoid freeze / thaw cycles.

Buffer: PBS containing 50% glycerol, preserved with proclin300 or sodium azide (as specified on the Certificate of Analysis), pH 7.3.

Validation Data



Western blot analysis of various lysates using SEMA4C Rabbit pAb (A8225) at 1:1000 dilution.
Secondary antibody: HRP-conjugated Goat anti-Rabbit IgG (H+L) (AS014) at 1:10000 dilution.
Lysates/proteins: 25µg per lane.
Blocking buffer: 3% nonfat dry milk in TBST.
Detection: ECL Basic Kit (RM00020).
Exposure time: 90s.