

A8222

Leader in Biomolecular Solutions for Life Science



DYM Rabbit pAb

Catalog No.: A8222

Basic Information

Observed MW

78kDa

Calculated MW

76kDa

Category

Polyclonal Antibody

Applications

WB, ELISA

Cross-Reactivity

Human

Background

This gene encodes a protein which regulates Golgi-associated secretory pathways that are essential to endochondral bone formation during early development. This gene is also believed to play a role in early brain development. This gene is widely expressed in embryos and is particularly abundant in chondrocytes and brain tissues. It encodes a peripheral membrane protein which shuttles between the cytosol and Golgi complex. Mutations in this gene are associated with two types of recessive osteochondrodysplasia: Dyggve-Melchior-Clausen (DMC) dysplasia and Smith-McCort (SMC) dysplasia.

Recommended Dilutions

WB 1:500 - 1:2000

Immunogen Information

Gene ID

54808

Swiss Prot

Q7RTS9

Immunogen

Recombinant fusion protein containing a sequence corresponding to amino acids 1-250 of human DYM (NP_060123.3).

Synonyms

DMC; SMC; DYM

Contact



www.abclonal.com

Product Information

Source

Rabbit

Isotype

IgG

Purification

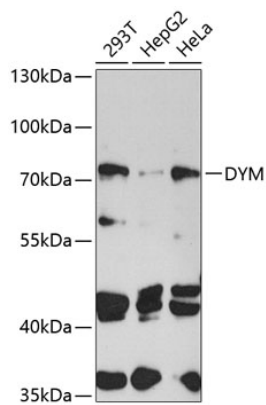
Affinity purification

Storage

Store at -20°C. Avoid freeze / thaw cycles.

Buffer: PBS with 0.02% sodium azide, 50% glycerol, pH7.3.

Validation Data



Western blot analysis of extracts of various cell lines, using DYM antibody (A8222) at 1:1000 dilution.

Secondary antibody: HRP Goat Anti-Rabbit IgG (H+L) (AS014) at 1:10000 dilution.

Lysates/proteins: 25µg per lane.

Blocking buffer: 3% nonfat dry milk in TBST.

Detection: ECL Basic Kit (RM00020).

Exposure time: 90s.