

A8150

Leader in Biomolecular Solutions for Life Science



# GLUT3/SLC2A3 Rabbit pAb

Catalog No.: A8150

4 Publications

## Basic Information

### Observed MW

48-60kDa

### Calculated MW

54kDa

### Category

Polyclonal Antibody

### Applications

WB,IHC-P,ELISA

### Cross-Reactivity

Human,Mouse,Rat

## Background

Enables dehydroascorbic acid transmembrane transporter activity; glucose binding activity; and glucose transmembrane transporter activity. Involved in glucose import across plasma membrane and transport across blood-brain barrier. Is integral component of plasma membrane. Biomarker of Alzheimer's disease; acanthosis nigricans; diabetes mellitus; and type 2 diabetes mellitus.

## Recommended Dilutions

WB 1:100 - 1:500

IHC-P 1:50 - 1:200

ELISA Recommended starting concentration is 1 µg/mL. Please optimize the concentration based on your specific assay requirements.

## Immunogen Information

### Gene ID

6515

### Swiss Prot

P11169

### Immunogen

Recombinant protein (or fragment). This information is considered to be commercially sensitive.

### Synonyms

GLUT3; GLUT3/SLC2A3

## Contact

 [www.abclonal.com](http://www.abclonal.com)

## Product Information

### Source

Rabbit

### Isotype

IgG

### Purification

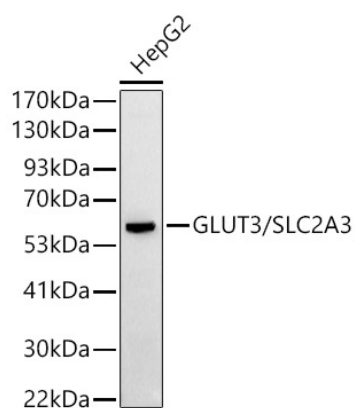
Affinity purification

### Storage

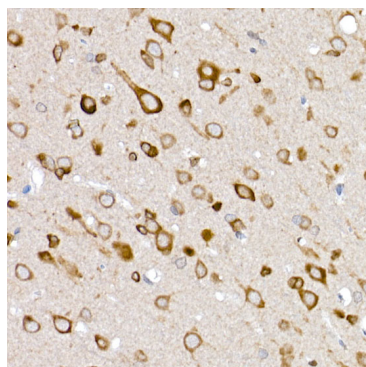
Store at -20°C. Avoid freeze / thaw cycles.

Buffer: PBS containing 50% glycerol, preserved with proclin300 or sodium azide (as specified on the Certificate of Analysis), pH 7.3.

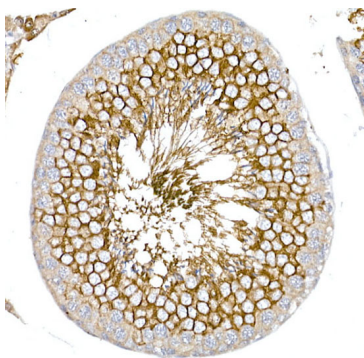
## Validation Data



Western blot analysis of lysates from HepG2 cells, using GLUT3/SLC2A3 Rabbit pAb (A8150) at 1:500 dilution.  
Secondary antibody: HRP-conjugated Goat anti-Rabbit IgG (H+L) (AS014) at 1:10000 dilution.  
Lysates/proteins: 25µg per lane.  
Blocking buffer: 3% nonfat dry milk in TBST.  
Detection: ECL Basic Kit (RM00020).  
Exposure time: 90s.



Immunohistochemistry analysis of paraffin-embedded Rat brain using GLUT3/SLC2A3 Rabbit pAb (A8150) at dilution of 1:50 (40x lens). High pressure antigen retrieval performed with 0.01M Citrate buffer (pH 6.0) prior to IHC staining.



Immunohistochemistry analysis of paraffin-embedded Rat testis using GLUT3/SLC2A3 Rabbit pAb (A8150) at dilution of 1:50 (40x lens). High pressure antigen retrieval performed with 0.01M Citrate buffer (pH 6.0) prior to IHC staining.