

A8076

Leader in Biomolecular Solutions for Life Science



SPEM1 Rabbit pAb

Catalog No.: A8076

Basic Information

Observed MW

36kDa

Calculated MW

35kDa

Category

Polyclonal Antibody

Applications

WB,ELISA

Cross-Reactivity

Human,Rat

Background

Predicted to be involved in flagellated sperm motility and sperm individualization. Predicted to act upstream of or within spermatogenesis. Predicted to be integral component of membrane. Predicted to be active in cytoplasm.

Recommended Dilutions

WB 1:500 - 1:2000

ELISA Recommended starting concentration is 1 µg/mL. Please optimize the concentration based on your specific assay requirements.

Immunogen Information

Gene ID

374768

Swiss Prot

Q8N4L4

Immunogen

Recombinant protein (or fragment). This information is considered to be commercially sensitive.

Synonyms

C17orf83; SPEM1

Contact

 www.abclonal.com

Product Information

Source

Rabbit

Isotype

IgG

Purification

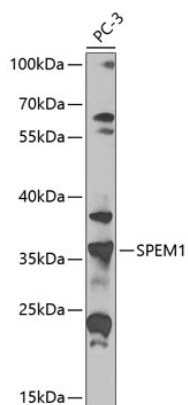
Affinity purification

Storage

Store at -20°C. Avoid freeze / thaw cycles.

Buffer: PBS with 0.02% sodium azide, 50% glycerol, pH7.3.

Validation Data



Western blot analysis of lysates from PC-3 cells, using SPEM1 Rabbit pAb (A8076) at 1:1000 dilution.

Secondary antibody: HRP-conjugated Goat anti-Rabbit IgG (H+L) (AS014) at 1:10000 dilution.

Lysates/proteins: 25µg per lane.

Blocking buffer: 3% nonfat dry milk in TBST.

Detection: ECL Basic Kit (RM00020).

Exposure time: 90s.