

A8063

Leader in Biomolecular Solutions for Life Science



MTCH1 Rabbit pAb

Catalog No.: A8063

2 Publications

Basic Information

Observed MW

45-50kDa

Calculated MW

42kDa

Category

Polyclonal Antibody

Applications

WB,IHC-P,ELISA

Cross-Reactivity

Human,Mouse,Rat

Background

This gene encodes a member of the mitochondrial carrier family. The encoded protein is localized to the mitochondrion inner membrane and induces apoptosis independent of the proapoptotic proteins Bax and Bak. Pseudogenes on chromosomes 6 and 11 have been identified for this gene. Alternatively spliced transcript variants encoding multiple isoforms have been observed.

Recommended Dilutions

WB 1:500 - 1:2000

IHC-P 1:50 - 1:200

ELISA Recommended starting concentration is 1 µg/mL. Please optimize the concentration based on your specific assay requirements.

Immunogen Information

Gene ID

23787

Swiss Prot

Q9NZJ7

Immunogen

Recombinant fusion protein containing a sequence corresponding to amino acids 100-250 of human MTCH1 (NP_001258570.1).

Synonyms

PSAP; PIG60; CGI-64; SLC25A49; MTCH1

Contact



www.abclonal.com

Product Information

Source

Rabbit

Isotype

IgG

Purification

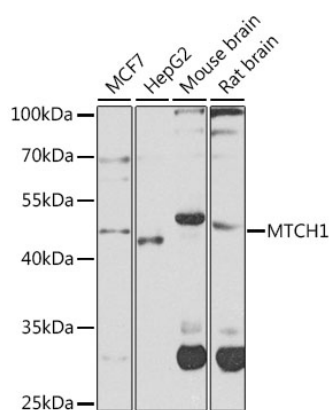
Affinity purification

Storage

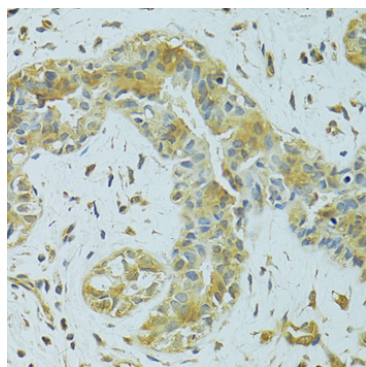
Store at -20°C. Avoid freeze / thaw cycles.

Buffer: PBS with 0.02% sodium azide,50% glycerol,pH7.3.

Validation Data



Western blot analysis of various lysates using MTCH1 Rabbit pAb (A8063) at 1:1000 dilution.
Secondary antibody: HRP-conjugated Goat anti-Rabbit IgG (H+L) (AS014) at 1:10000 dilution.
Lysates/proteins: 25µg per lane.
Blocking buffer: 3% nonfat dry milk in TBST.
Detection: ECL Enhanced Kit (RM00021).
Exposure time: 30s.



Immunohistochemistry analysis of paraffin-embedded Human breast cancer using MTCH1 Rabbit pAb (A8063) at dilution of 1:100 (40x lens). Microwave antigen retrieval performed with 0.01M PBS Buffer (pH 7.2) prior to IHC staining.