

A8036

Leader in Biomolecular Solutions for Life Science



## EPHA5 Mouse mAb

Catalog No.: A8036

### Basic Information

#### Observed MW

150kDa

#### Calculated MW

115kDa

#### Category

Monoclonal Antibody

#### Applications

WB,IHC-P,ELISA

#### Cross-Reactivity

Human

### Background

This gene belongs to the ephrin receptor subfamily of the protein-tyrosine kinase family. EPH and EPH-related receptors have been implicated in mediating developmental events, particularly in the nervous system. Receptors in the EPH subfamily typically have a single kinase domain and an extracellular region containing a Cys-rich domain and 2 fibronectin type III repeats. The ephrin receptors are divided into 2 groups based on the similarity of their extracellular domain sequences and their affinities for binding ephrin-A and ephrin-B ligands. Alternatively spliced transcript variants encoding different isoforms have been described.

### Recommended Dilutions

**WB** 1:500 - 1:2000

**IHC-P** 1:10 - 1:50

**ELISA** Recommended starting concentration is 1 µg/mL. Please optimize the concentration based on your specific assay requirements.

### Immunogen Information

#### Gene ID

2044

#### Swiss Prot

P54756

#### Immunogen

Recombinant protein (or fragment). This information is considered to be commercially sensitive.

#### Synonyms

EK7; CEK7; EHK1; HEK7; EHK-1; TYRO4; EPHA5

### Contact

 [www.abclonal.com](http://www.abclonal.com)

### Product Information

#### Source

Mouse

#### Isotype

IgG

#### Purification

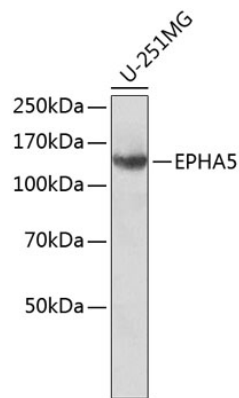
Affinity purification

#### Storage

Store at 4°C. Avoid freeze / thaw cycles.  
Buffer: PBS with 0.02% sodium azide, pH 7.3.

## Validation Data

---



Western blot analysis of lysates from U-251MG cells, using EPHA5 Mouse mAb (A8036).  
Secondary antibody: HRP-conjugated Goat anti-Mouse IgG (H+L) (AS003) at 1:10000 dilution.

Lysates/proteins: 25µg per lane.

Blocking buffer: 3% nonfat dry milk in TBST.