

A7910

Leader in Biomolecular Solutions for Life Science



# CAPRIN1 Rabbit pAb

Catalog No.: A7910 **2 Publications**

## Basic Information

### Observed MW

120kDa

### Calculated MW

78kDa

### Category

Polyclonal Antibody

### Applications

WB,IF/ICC,ELISA

### Cross-Reactivity

Human,Mouse,Rat

## Background

Enables RNA binding activity. Predicted to be involved in negative regulation of translation and positive regulation of dendritic spine morphogenesis. Located in cell leading edge and cytosol.

## Recommended Dilutions

**WB** 1:1000 - 1:5000

**IF/ICC** 1:50 - 1:200

## Immunogen Information

### Gene ID

4076

### Swiss Prot

Q14444

### Immunogen

Recombinant fusion protein containing a sequence corresponding to amino acids 1-300 of human CAPRIN1 (NP\_005889.3).

### Synonyms

M11S1; GPIAP1; RNG105; GPIP137; GRIP137; p137GPI; CAPRIN1

## Contact



[www.abclonal.com](http://www.abclonal.com)

## Product Information

### Source

Rabbit

### Isotype

IgG

### Purification

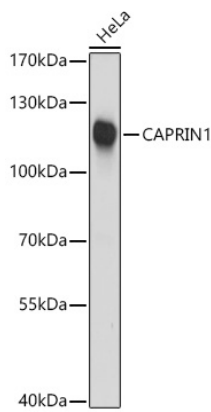
Affinity purification

### Storage

Store at -20°C. Avoid freeze / thaw cycles.

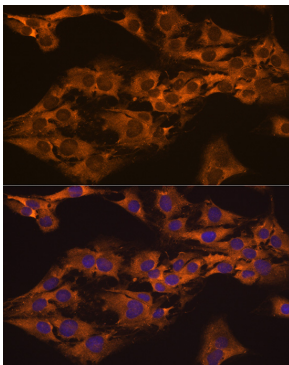
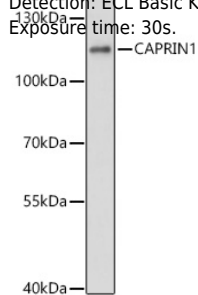
Buffer: PBS with 0.05% proclin300,50% glycerol,pH7.3.

## Validation Data

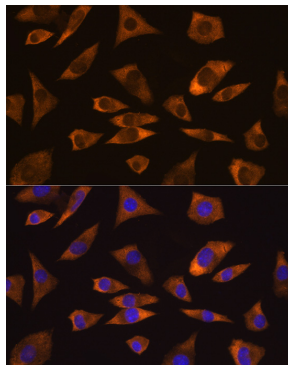


Western blot analysis of extracts of HeLa cells, using CAPRIN1 antibody (A7910) at 1:3000 dilution.  
Secondary antibody: HRP Goat Anti-Rabbit IgG (H+L) (AS014) at 1:10000 dilution.  
Lysates/proteins: 25µg per lane.  
Blocking buffer: 3% nonfat dry milk in TBST.  
Detection: ECL Basic Kit (RM00020).  
Exposure time: 10s.

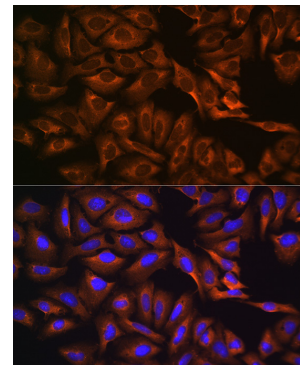
Western blot analysis of extracts of Mouse brain, using CAPRIN1 antibody (A7910) at 1:3000 dilution.  
Secondary antibody: HRP Goat Anti-Rabbit IgG (H+L) (AS014) at 1:10000 dilution.  
Lysates/proteins: 25µg per lane.  
Blocking buffer: 3% nonfat dry milk in TBST.  
Detection: ECL Basic Kit (RM00020).  
Exposure time: 30s.



Immunofluorescence analysis of C6 cells using CAPRIN1 Rabbit pAb (A7910) at dilution of 1:100 (40x lens). Blue: DAPI for nuclear staining.



Immunofluorescence analysis of L929 cells using CAPRIN1 Rabbit pAb (A7910) at dilution of 1:100 (40x lens). Blue: DAPI for nuclear staining.



Immunofluorescence analysis of U-2 OS cells using CAPRIN1 Rabbit pAb (A7910) at dilution of 1:100 (40x lens). Blue: DAPI for nuclear staining.