

A7846

Leader in Biomolecular Solutions for Life Science



PRDM6 Rabbit pAb

Catalog No.: A7846

Basic Information

Observed MW

80kDa

Calculated MW

64kDa

Category

Polyclonal Antibody

Applications

WB,ELISA

Cross-Reactivity

Human,Mouse,Rat

Background

The protein encoded by this gene is a transcriptional repressor and a member of the PRDM family. Family members contain a PR domain and multiple zinc-finger domains. The encoded protein is involved in regulation of vascular smooth muscle cells (VSMC) contractile proteins. Mutations in this gene result in patent ductus arteriosus 3 (PDA3).

Recommended Dilutions

WB 1:500 - 1:2000

ELISA Recommended starting concentration is 1 µg/mL. Please optimize the concentration based on your specific assay requirements.

Immunogen Information

Gene ID

93166

Swiss Prot

Q9NQX0

Immunogen

Recombinant fusion protein containing a sequence corresponding to amino acids 376-595 of human PRDM6 (NP_001129711.1).

Synonyms

PDA3; KMT8C; PRISM; PRDM6

Contact



www.abclonal.com

Product Information

Source

Rabbit

Isotype

IgG

Purification

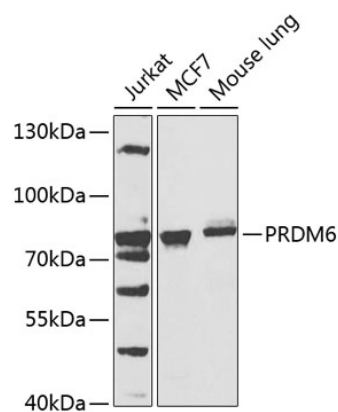
Affinity purification

Storage

Store at -20°C. Avoid freeze / thaw cycles.

Buffer: PBS with 0.02% sodium azide,50% glycerol,pH7.3.

Validation Data



Western blot analysis of various lysates using PRDM6 Rabbit pAb (A7846) at 1:1000 dilution.
Secondary antibody: HRP-conjugated Goat anti-Rabbit IgG (H+L) (AS014) at 1:10000 dilution.
Lysates/proteins: 25µg per lane.
Blocking buffer: 3% nonfat dry milk in TBST.
Detection: ECL Basic Kit (RM00020).
Exposure time: 90s.