

A7815

Leader in Biomolecular Solutions for Life Science



FLVCR2 Rabbit pAb

Catalog No.: A7815

Basic Information

Observed MW

57kDa

Calculated MW

57kDa

Category

Polyclonal Antibody

Applications

WB,ELISA

Cross-Reactivity

Human,Mouse

Background

This gene encodes a member of the major facilitator superfamily. The encoded transmembrane protein is a calcium transporter. Unlike the related protein feline leukemia virus subgroup C receptor 1, the protein encoded by this locus does not bind to feline leukemia virus subgroup C envelope protein. The encoded protein may play a role in development of brain vascular endothelial cells, as mutations at this locus have been associated with proliferative vasculopathy and hydranencephaly-hydrocephaly syndrome. Alternatively spliced transcript variants have been described.

Recommended Dilutions

WB 1:500 - 1:2000

Immunogen Information

Gene ID

55640

Swiss Prot

Q9UPI3

Immunogen

Recombinant fusion protein containing a sequence corresponding to amino acids 1-100 of human FLVCR2 (NP_060261.2).

Synonyms

CCT; EPV; PVHH; MFSD7C; SLC49A2; C14orf58; FLVCR14q; FLVCR2

Contact



www.abclonal.com

Product Information

Source

Rabbit

Isotype

IgG

Purification

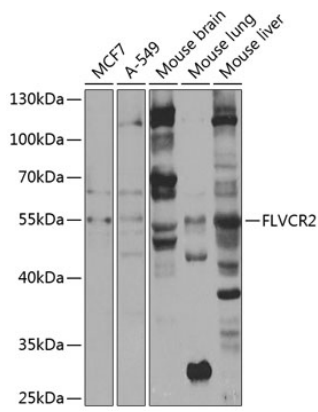
Affinity purification

Storage

Store at -20°C. Avoid freeze / thaw cycles.

Buffer: PBS with 0.02% sodium azide,50% glycerol,pH7.3.

Validation Data



Western blot analysis of extracts of various cell lines, using FLVCR2 antibody (A7815) at 1:1000 dilution.

Secondary antibody: HRP Goat Anti-Rabbit IgG (H+L) (AS014) at 1:10000 dilution.

Lysates/proteins: 25µg per lane.

Blocking buffer: 3% nonfat dry milk in TBST.

Detection: ECL Basic Kit (RM00020).

Exposure time: 5s.