

A7646

Leader in Biomolecular Solutions for Life Science



BAAT Rabbit pAb

Catalog No.: A7646 **1 Publications**

Basic Information

Observed MW

40-46kDa

Calculated MW

46kDa

Category

Polyclonal Antibody

Applications

WB,IHC-P,IF/ICC,ELISA

Cross-Reactivity

Human,Mouse,Rat

Background

The protein encoded by this gene is a liver enzyme that catalyzes the transfer of C24 bile acids from the acyl-CoA thioester to either glycine or taurine, the second step in the formation of bile acid-amino acid conjugates. The bile acid conjugates then act as a detergent in the gastrointestinal tract, which enhances lipid and fat-soluble vitamin absorption. Defects in this gene are a cause of familial hypercholanemia (FHCA). Two transcript variants encoding the same protein have been found for this gene.

Recommended Dilutions

WB	1:500 - 1:2000
IHC-P	1:100 - 1:500
IF/ICC	1:50 - 1:200
ELISA	Recommended starting concentration is 1 µg/mL. Please optimize the concentration based on your specific assay requirements.

Contact

 www.abclonal.com

Immunogen Information

Gene ID	Swiss Prot
570	Q14032

Immunogen

Recombinant protein (or fragment). This information is considered to be commercially sensitive.

Synonyms

BAT; HCHO; BACAT; BACD1; BAAT

Product Information

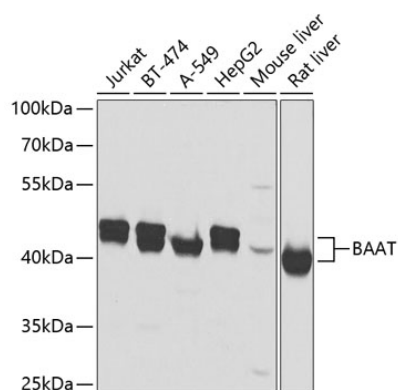
Source	Isotype	Purification
Rabbit	IgG	Affinity purification

Storage

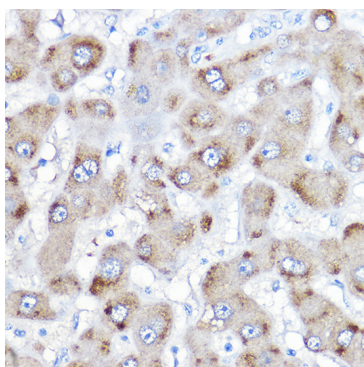
Store at -20°C. Avoid freeze / thaw cycles.

Buffer: PBS containing 50% glycerol, preserved with proclin300 or sodium azide (as specified on the Certificate of Analysis), pH 7.3.

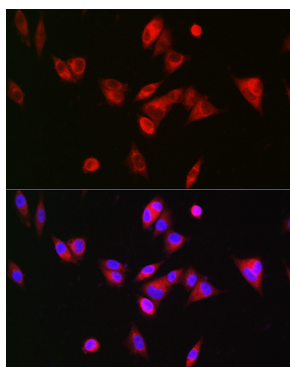
Validation Data



Western blot analysis of various lysates using BAAT Rabbit pAb (A7646) at 1:2000 dilution.
Secondary antibody: HRP-conjugated Goat anti-Rabbit IgG (H+L) (AS014) at 1:10000 dilution.
Lysates/proteins: 25µg per lane.
Blocking buffer: 3% nonfat dry milk in TBST.
Detection: ECL Basic Kit (RM00020).
Exposure time: 1s.



Immunohistochemistry analysis of paraffin-embedded Human liver using BAAT Rabbit pAb (A7646) at dilution of 1:500 (40x lens). High pressure antigen retrieval performed with 0.01M Citrate buffer (pH 6.0) prior to IHC staining.



Immunofluorescence analysis of Hep G2 cells using BAAT Rabbit pAb (A7646) at dilution of 1:200 (40x lens). Secondary antibody: Cy3-conjugated Goat anti-Rabbit IgG (H+L) (AS007) at 1:500 dilution. Blue: DAPI for nuclear staining.