

A7614

Leader in Biomolecular Solutions for Life Science



KIF6 Rabbit pAb

Catalog No.: A7614

Basic Information

Observed MW

93kDa

Calculated MW

93kDa

Category

Polyclonal Antibody

Applications

WB,ELISA

Cross-Reactivity

Human,Mouse

Background

This gene encodes a member of a family of molecular motors which are involved in intracellular transport of protein complexes, membrane organelles, and messenger ribonucleic acid along microtubules. Kinesins function as homodimeric molecules with two N-terminal head domains that move along microtubules and two C-terminal tail domains that interact with the transported cargo, either directly or indirectly, through adapter molecules. This gene is ubiquitously expressed in coronary arteries and other vascular tissue. A naturally occurring mutation in this gene is associated with coronary heart disease.

Recommended Dilutions

WB 1:500 - 1:2000

ELISA Recommended starting concentration is 1 µg/mL. Please optimize the concentration based on your specific assay requirements.

Immunogen Information

Gene ID

221458

Swiss Prot

Q6ZMV9

Immunogen

Recombinant fusion protein containing a sequence corresponding to amino acids 565-814 of human KIF6 (NP_659464.3).

Synonyms

C6orf102; dJ137F1.4; dJ188D3.1; dJ1043E3.1; KIF6

Contact

 www.abclonal.com

Product Information

Source

Rabbit

Isotype

IgG

Purification

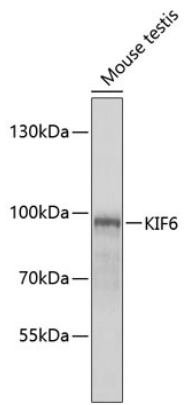
Affinity purification

Storage

Store at -20°C. Avoid freeze / thaw cycles.

Buffer: PBS with 0.02% sodium azide,50% glycerol,pH7.3.

Validation Data



Western blot analysis of lysates from mouse testis, using KIF6 Rabbit pAb (A7614) at 1:1000 dilution.

Secondary antibody: HRP-conjugated Goat anti-Rabbit IgG (H+L) (AS014) at 1:10000 dilution.

Lysates/proteins: 25 μ g per lane.

Blocking buffer: 3% nonfat dry milk in TBST.

Detection: ECL Basic Kit (RM00020).

Exposure time: 90s.