

A7531

Leader in Biomolecular Solutions for Life Science



COX1 Rabbit pAb

Catalog No.: A7531

10 Publications

Basic Information

Observed MW

37kDa/34kDa

Calculated MW

56kDa

Category

Polyclonal Antibody

Applications

WB,IHC-P,ELISA,IF

Cross-Reactivity

Human,Mouse,Rat

Background

Enables cytochrome-c oxidase activity. Predicted to be involved in electron transport coupled proton transport; mitochondrial electron transport, cytochrome c to oxygen; and response to oxidative stress. Located in mitochondrial inner membrane. Part of mitochondrial respiratory chain complex IV. Is expressed in several structures, including brown fat; heart; liver; metanephros; and skeletal muscle. Orthologous to human MT-CO1 (mitochondrially encoded cytochrome c oxidase I).

Recommended Dilutions

WB 1:500 - 1:1000

IHC-P 1:50 - 1:200

ELISA Recommended starting concentration is 1 µg/mL. Please optimize the concentration based on your specific assay requirements.

Immunogen Information

Gene ID

17708

Swiss Prot

Immunogen

A synthetic peptide corresponding to a sequence within amino acids 415-514 of mouse COX1 (NP_904330.1).

Synonyms

CoxI; COX1

Contact



www.abclonal.com

Product Information

Source

Rabbit

Isotype

IgG

Purification

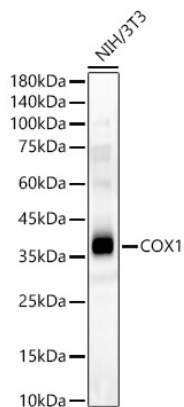
Affinity purification

Storage

Store at -20°C. Avoid freeze / thaw cycles.

Buffer: PBS with 0.09% Sodium azide,50% glycerol,pH7.3.

Validation Data



Western blot analysis of lysates from NIH/3T3 cells, using COX1 Rabbit pAb (A7531) at 1:400 dilution.

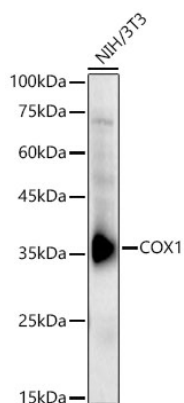
Secondary antibody: HRP-conjugated Goat anti-Rabbit IgG (H+L) (AS014) at 1:10000 dilution.

Lysates/proteins: 25µg per lane.

Blocking buffer: 3% nonfat dry milk in TBST.

Detection: ECL Basic Kit (RM00020).

Exposure time: 30s.



Western blot analysis of lysates from NIH/3T3 cells using COX1 Rabbit pAb (A7531) at 1:1800 dilution.

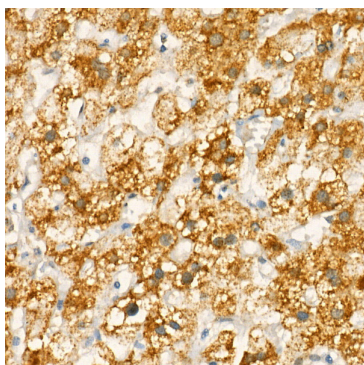
Secondary antibody: HRP-conjugated Goat anti-Rabbit IgG (H+L) (AS014) at 1:10000 dilution.

Lysates/proteins: 25 µg per lane.

Blocking buffer: 3% nonfat dry milk in TBST.

Detection: ECL Basic Kit (RM00020).

Exposure time: 30s.



Immunohistochemistry analysis of paraffin-embedded Human liver using COX1 Rabbit pAb (A7531) at dilution of 1:20 (40x lens). High pressure antigen retrieval performed with 0.01M Citrate Bufferr (pH 6.0) prior to IHC staining.