

A7527

Leader in Biomolecular Solutions for Life Science



# ZFYVE1 Rabbit pAb

Catalog No.: A7527

6 Publications

## Basic Information

### Observed MW

87kDa

### Calculated MW

87kDa

### Category

Polyclonal Antibody

### Applications

WB,ELISA

### Cross-Reactivity

Human

## Background

The FYVE domain mediates the recruitment of proteins involved in membrane trafficking and cell signaling to phosphatidylinositol 3-phosphate-containing membranes. This protein contains two zinc-binding FYVE domains in tandem and is reported to localize to the Golgi apparatus. Alternative splicing results in multiple transcript variants.

## Recommended Dilutions

**WB** 1:500 - 1:2000

**ELISA** Recommended starting concentration is 1 µg/mL. Please optimize the concentration based on your specific assay requirements.

## Immunogen Information

### Gene ID

53349

### Swiss Prot

Q9HBF4

### Immunogen

Recombinant fusion protein containing a sequence corresponding to amino acids 500-735 of human ZFYVE1 (NP\_067083.1).

### Synonyms

SR3; DFCEP1; TAFF1; ZNFN2A1; PPP1R172; ZFYVE1

## Contact



[www.abclonal.com](http://www.abclonal.com)

## Product Information

### Source

Rabbit

### Isotype

IgG

### Purification

Affinity purification

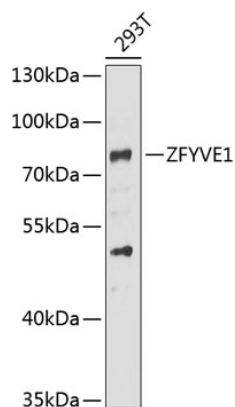
### Storage

Store at -20°C. Avoid freeze / thaw cycles.

Buffer: PBS with 0.09% Sodium azide, 50% glycerol, pH7.3.

## Validation Data

---



Western blot analysis of lysates from 293T cells, using ZFYVE1 Rabbit pAb (A7527) at 1:1000 dilution.

Secondary antibody: HRP-conjugated Goat anti-Rabbit IgG (H+L) (AS014) at 1:10000 dilution.

Lysates/proteins: 25µg per lane.

Blocking buffer: 3% nonfat dry milk in TBST.

Detection: ECL Basic Kit (RM00020).

Exposure time: 90s.