

A7526

Leader in Biomolecular Solutions for Life Science



www.abclonal.com

ATG14 Rabbit pAb

Catalog No.: A7526

8 Publications

Basic Information

Observed MW

65kDa

Calculated MW

55kDa

Category

Polyclonal Antibody

Applications

WB,IF/ICC,ELISA

Cross-Reactivity

Human,Mouse,Rat

Background

Enables GTPase binding activity. Involved in several processes, including macroautophagy; regulation of phosphorylation; and response to mitochondrial depolarisation. Acts upstream of or within endosome to lysosome transport. Located in autophagosome and phagophore assembly site membrane. Is extrinsic component of omegasome membrane and extrinsic component of phagophore assembly site membrane.

Recommended Dilutions

WB 1:500 - 1:1000

IF/ICC 1:50 - 1:200

ELISA Recommended starting concentration is 1 µg/mL. Please optimize the concentration based on your specific assay requirements.

Immunogen Information

Gene ID

22863

Swiss Prot

Q6ZNE5

Immunogen

Recombinant protein (or fragment). This information is considered to be commercially sensitive.

Synonyms

ATG14L; BARKOR; KIAA0831; ATG14

Contact



www.abclonal.com

Product Information

Source

Rabbit

Isotype

IgG

Purification

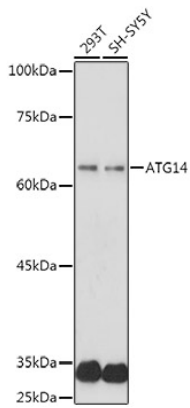
Affinity purification

Storage

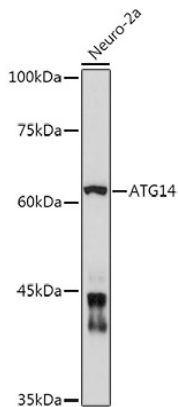
Store at -20°C. Avoid freeze / thaw cycles.

Buffer: PBS containing 50% glycerol, preserved with proclin300 or sodium azide (as specified on the Certificate of Analysis), pH 7.3.

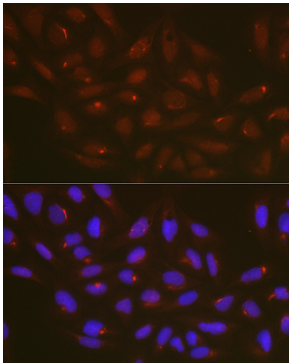
Validation Data



Western blot analysis of various lysates using ATG14 Rabbit pAb (A7526) at 1:1000 dilution.
Secondary antibody: HRP-conjugated Goat anti-Rabbit IgG (H+L) (AS014) at 1:10000 dilution.
Lysates/proteins: 25µg per lane.
Blocking buffer: 3% nonfat dry milk in TBST.
Detection: ECL Basic Kit (RM00020).
Exposure time: 180s.



Western blot analysis of lysates from Neuro-2a cells, using ATG14 Rabbit pAb (A7526) at 1:1000 dilution.
Secondary antibody: HRP-conjugated Goat anti-Rabbit IgG (H+L) (AS014) at 1:10000 dilution.
Lysates/proteins: 25µg per lane.
Blocking buffer: 3% nonfat dry milk in TBST.
Detection: ECL Enhanced Kit (RM00021).
Exposure time: 180s.



Immunofluorescence analysis of U2OS cells using ATG14 Rabbit pAb (A7526) at dilution of 1:100 (40x lens). Secondary antibody: Cy3-conjugated Goat anti-Rabbit IgG (H+L) (AS007) at 1:500 dilution. Blue: DAPI for nuclear staining.