

A7525

Leader in Biomolecular Solutions for Life Science



PML/RARA Rabbit pAb

Catalog No.: A7525

Basic Information

Observed MW

51kDa/130kDa

Calculated MW

47-48kDa/62-97kDa/39kDa/50kDa

Category

Polyclonal Antibody

Applications

WB,ELISA

Cross-Reactivity

Human,Mouse,Rat

Background

Promyelocytic leukemia/retinoic acid receptor alpha or PML-RARA refers to an abnormal fusion gene sequence. It is a specific rearrangement of genetic material from two separate chromosomes (chromosomal translocation) and is associated with a specific type of leukemia. Promyelocytic leukemia (PML) is a member of the tripartite motif (TRIM) family. The TRIM motif includes three zinc-binding domains, a RING, a B-box type 1 and a B-box type 2, and a coiled-coil region. This phosphoprotein localizes to nuclear bodies where it functions as a transcription factor and tumor suppressor. Its expression is cell-cycle related and it regulates the p53 response to oncogenic signals. The gene is often involved in the translocation with the retinoic acid receptor alpha gene associated with acute promyelocytic leukemia (APL). Retinoic acid receptor alpha (RARA), regulates transcription in a ligand-dependent manner. This gene has been implicated in regulation of development, differentiation, apoptosis, granulopoiesis, and transcription of clock genes. Translocations between this locus and several other loci have been associated with acute promyelocytic leukemia.

Recommended Dilutions

WB 1:500 - 1:2000

ELISA Recommended starting concentration is 1 µg/mL. Please optimize the concentration based on your specific assay requirements.

Immunogen Information

Gene ID

5371/5914

Swiss Prot

P29590/P10276

Immunogen

Recombinant protein (or fragment). This information is considered to be commercially sensitive.

Synonyms

PML/RARA

Contact

 www.abclonal.com

Product Information

Source

Rabbit

Isotype

IgG

Purification

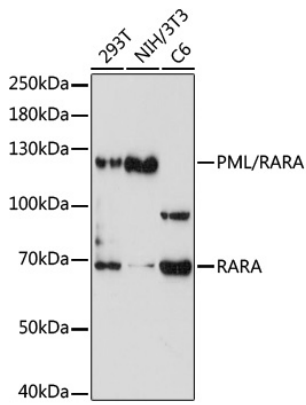
Affinity purification

Storage

Store at -20°C. Avoid freeze / thaw cycles.

Buffer: PBS with 0.02% sodium azide, 50% glycerol, pH 7.3.

Validation Data



Western blot analysis of various lysates using PML/RARA Rabbit pAb (A7525) at 1:1000 dilution.

Secondary antibody: HRP-conjugated Goat anti-Rabbit IgG (H+L) (AS014) at 1:10000 dilution.

Lysates/proteins: 25µg per lane.

Blocking buffer: 3% nonfat dry milk in TBST.

Detection: ECL Basic Kit (RM00020).

Exposure time: 90s.