

A7518

Leader in Biomolecular Solutions for Life Science



Smad9 Rabbit pAb

Catalog No.: A7518

Basic Information

Observed MW

45-52kDa

Calculated MW

52kDa

Category

Polyclonal Antibody

Applications

IHC-P,ELISA

Cross-Reactivity

Human,Mouse,Rat

Background

The protein encoded by this gene is a member of the SMAD family, which transduces signals from TGF-beta family members. The encoded protein is activated by bone morphogenetic proteins and interacts with SMAD4. Two transcript variants encoding different isoforms have been found for this gene.

Recommended Dilutions

IHC-P 1:50 - 1:200

ELISA Recommended starting concentration is 1 µg/mL. Please optimize the concentration based on your specific assay requirements.

Immunogen Information

Gene ID

4093

Swiss Prot

O15198

Immunogen

Recombinant protein (or fragment). This information is considered to be commercially sensitive.

Synonyms

PPH2; MADH6; MADH9; SMAD8; SMAD8A; SMAD8B; SMAD8/9; Smad9

Contact



www.abclonal.com

Product Information

Source

Rabbit

Isotype

IgG

Purification

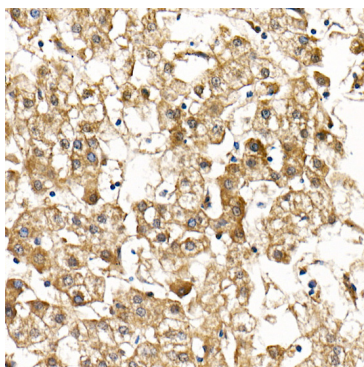
Affinity purification

Storage

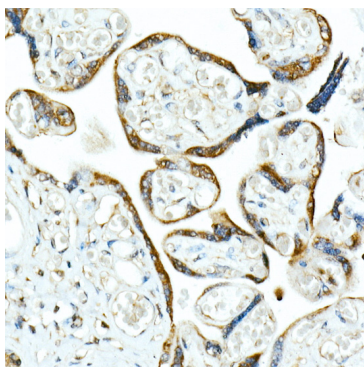
Store at -20°C. Avoid freeze / thaw cycles.

Buffer: PBS with 0.02% sodium azide, 50% glycerol, pH 7.3.

Validation Data



Immunohistochemistry analysis of paraffin-embedded Human liver cancer using Smad9 Rabbit pAb (A7518) at dilution of 1:100 (40x lens). High pressure antigen retrieval performed with 0.01M Citrate buffer (pH 6.0) prior to IHC staining.



Immunohistochemistry analysis of paraffin-embedded Human placenta using Smad9 Rabbit pAb (A7518) at dilution of 1:100 (40x lens). High pressure antigen retrieval performed with 0.01M Citrate buffer (pH 6.0) prior to IHC staining.