

A7487

Leader in Biomolecular Solutions for Life Science



## ELF2 Rabbit pAb

Catalog No.: A7487

1 Publications

### Basic Information

#### Observed MW

64kDa

#### Calculated MW

64kDa

#### Category

Polyclonal Antibody

#### Applications

WB, ELISA

#### Cross-Reactivity

Human, Mouse

### Background

Enables DNA-binding transcription factor activity, RNA polymerase II-specific and sequence-specific double-stranded DNA binding activity. Involved in negative regulation of transcription, DNA-templated; positive regulation of transcription, DNA-templated; and regulation of transcription by RNA polymerase II. Located in cytosol and nuclear body.

### Recommended Dilutions

WB 1:500 - 1:2000

### Immunogen Information

#### Gene ID

1998

#### Swiss Prot

Q15723

#### Immunogen

Recombinant fusion protein containing a sequence corresponding to amino acids 1-140 of human ELF2 (NP\_006865.1).

#### Synonyms

EU32; NERF; NERF-2; NERF-1A; NERF-1B; NERF-1a; b; ELF2

### Contact



[www.abclonal.com](http://www.abclonal.com)

### Product Information

#### Source

Rabbit

#### Isotype

IgG

#### Purification

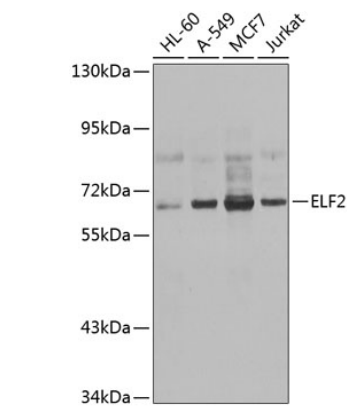
Affinity purification

#### Storage

Store at -20°C. Avoid freeze / thaw cycles.

Buffer: PBS with 0.02% sodium azide, 50% glycerol, pH 7.3.

# Validation Data



Western blot analysis of extracts of various cell lines, using ELF2 antibody (A7487) at 1:1000 dilution.  
Secondary antibody: HRP Goat Anti-Rabbit IgG (H+L) (AS014) at 1:10000 dilution.  
Lysates/proteins: 25µg per lane.  
Blocking buffer: 3% nonfat dry milk in TBST.  
Detection: ECL Basic Kit (RM00020).  
Exposure time: 1s.