

A7483

Leader in Biomolecular Solutions for Life Science



RPS6KL1 Rabbit pAb

Catalog No.: A7483

Basic Information

Observed MW

60kDa

Calculated MW

60kDa

Category

Polyclonal Antibody

Applications

WB,IF/ICC,ELISA

Cross-Reactivity

Human,Mouse,Rat

Background

Predicted to enable ATP binding activity; protein serine kinase activity; and protein serine/threonine kinase activity. Predicted to be involved in protein phosphorylation. Predicted to be located in ribosome.

Recommended Dilutions

WB 1:500 - 1:1000

IF/ICC 1:50 - 1:200

ELISA Recommended starting concentration is 1 µg/mL. Please optimize the concentration based on your specific assay requirements.

Immunogen Information

Gene ID

83694

Swiss Prot

Q9Y6S9

Immunogen

Recombinant fusion protein containing a sequence corresponding to amino acids 1-130 of human RPS6KL1 (NP_113652.2).

Synonyms

RSKL2; RPS6KL1

Contact

 www.abclonal.com

Product Information

Source

Rabbit

Isotype

IgG

Purification

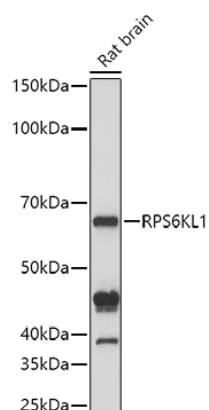
Affinity purification

Storage

Store at -20°C. Avoid freeze / thaw cycles.

Buffer: PBS with 0.09% Sodium azide,50% glycerol,pH7.3.

Validation Data



Western blot analysis of lysates from Rat brain , using RPS6KL1 Rabbit pAb (A7483) at 1:1000 dilution.

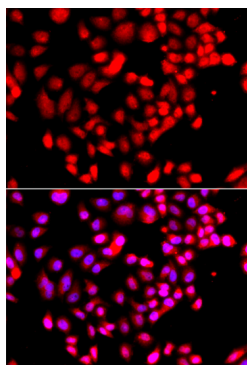
Secondary antibody: HRP-conjugated Goat anti-Rabbit IgG (H+L) (AS014) at 1:10000 dilution.

Lysates/proteins: 25µg per lane.

Blocking buffer: 3% nonfat dry milk in TBST.

Detection: ECL Basic Kit (RM00020).

Exposure time: 10s.



Immunofluorescence analysis of A549 cells using RPS6KL1 Rabbit pAb (A7483). Secondary antibody: Cy3-conjugated Goat anti-Rabbit IgG (H+L) (AS007) at 1:500 dilution. Blue: DAPI for nuclear staining.