

A7477

Leader in Biomolecular Solutions for Life Science



RPGRIP1 Rabbit pAb

Catalog No.: A7477

Basic Information

Observed MW

170kDa

Calculated MW

147kDa

Category

Polyclonal Antibody

Applications

WB,ELISA

Cross-Reactivity

Human,Mouse,Rat

Background

This gene encodes a photoreceptor protein that interacts with retinitis pigmentosa GTPase regulator protein and is a key component of cone and rod photoreceptor cells. Mutations in this gene lead to autosomal recessive congenital blindness.

Recommended Dilutions

WB 1:500 - 1:2000

ELISA Recommended starting concentration is 1 µg/mL. Please optimize the concentration based on your specific assay requirements.

Immunogen Information

Gene ID

57096

Swiss Prot

Q96KN7

Immunogen

Recombinant fusion protein containing a sequence corresponding to amino acids 400-580 of human RPGRIP1 (NP_065099.3).

Synonyms

LCA6; RG11; RGRIP; CORD13; RPGRIP; RPGRIP1d; RPGRIP1

Contact

 www.abclonal.com

Product Information

Source

Rabbit

Isotype

IgG

Purification

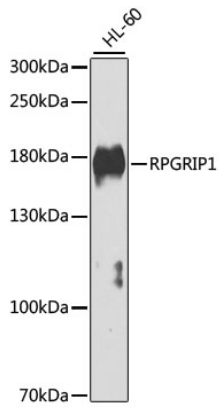
Affinity purification

Storage

Store at -20°C. Avoid freeze / thaw cycles.

Buffer: PBS with 0.02% sodium azide,50% glycerol,pH7.3.

Validation Data



Western blot analysis of lysates from HL-60 cells, using RPGRIP1 Rabbit pAb (A7477) at 1:1000 dilution.

Secondary antibody: HRP-conjugated Goat anti-Rabbit IgG (H+L) (AS014) at 1:10000 dilution.

Lysates/proteins: 25µg per lane.

Blocking buffer: 3% nonfat dry milk in TBST.

Detection: ECL Enhanced Kit (RM00021).

Exposure time: 30s.