

A7379

Leader in Biomolecular Solutions for Life Science



CAMK1G Rabbit pAb

Catalog No.: A7379

Basic Information

Observed MW

53kDa

Calculated MW

53kDa

Category

Polyclonal Antibody

Applications

WB,ELISA

Cross-Reactivity

Human,Mouse,Rat

Background

Predicted to enable calmodulin binding activity and calmodulin-dependent protein kinase activity. Predicted to be involved in peptidyl-serine phosphorylation. Predicted to be located in endomembrane system. Predicted to be part of calcium- and calmodulin-dependent protein kinase complex.

Recommended Dilutions

WB 1:500 - 1:2000

Immunogen Information

Gene ID

57172

Swiss Prot

Q96NX5

Immunogen

Recombinant fusion protein containing a sequence corresponding to amino acids 217-476 of human CAMK1G (NP_065172.1).

Synonyms

VWS1; CLICK3; CLICKIII; dJ272L16.1; CAMK1G

Contact

 www.abclonal.com

Product Information

Source

Rabbit

Isotype

IgG

Purification

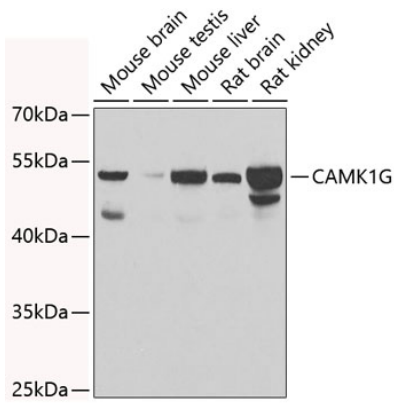
Affinity purification

Storage

Store at -20°C. Avoid freeze / thaw cycles.

Buffer: PBS with 0.02% sodium azide,50% glycerol,pH7.3.

Validation Data



Western blot analysis of extracts of various cell lines, using CAMK1G antibody (A7379) at 1:1000 dilution.

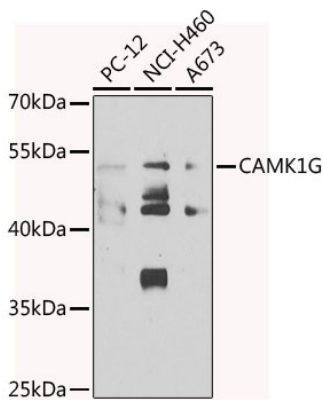
Secondary antibody: HRP Goat Anti-Rabbit IgG (H+L) (AS014) at 1:10000 dilution.

Lysates/proteins: 25µg per lane.

Blocking buffer: 3% nonfat dry milk in TBST.

Detection: ECL Basic Kit (RM00020).

Exposure time: 30s.



Western blot analysis of extracts of various cell lines, using CAMK1G antibody (A7379) at 1:1000 dilution.

Secondary antibody: HRP Goat Anti-Rabbit IgG (H+L) (AS014) at 1:10000 dilution.

Lysates/proteins: 25µg per lane.

Blocking buffer: 3% nonfat dry milk in TBST.

Detection: ECL Basic Kit (RM00020).

Exposure time: 90s.