

A7370

Leader in Biomolecular Solutions for Life Science



KIF3A Rabbit mAb

Catalog No.: A7370 **Recombinant**

Basic Information

Observed MW

80kDa

Calculated MW

80kDa

Category

SMab Recombinant Monoclonal
Antibody

Applications

WB,IHC-P,IF/ICC,ELISA

Cross-Reactivity

Human,Mouse,Rat

CloneNo number

ARC1428

Recommended Dilutions

WB	1:500 - 1:1000
IHC-P	1:50 - 1:200
IF/ICC	1:50 - 1:200
ELISA	Recommended starting concentration is 1 µg/mL. Please optimize the concentration based on your specific assay requirements.

Contact

 www.abclonal.com

Background

Enables protein phosphatase binding activity; small GTPase binding activity; and spectrin binding activity. Involved in protein localization to cell junction and protein transport. Located in centriole and centrosome. Part of kinesin II complex. Colocalizes with spindle microtubule.

Immunogen Information

Gene ID	Swiss Prot
11127	Q9Y496

Immunogen

A synthetic peptide corresponding to a sequence within amino acids 600-699 of human KIF3A (Q9Y496).

Synonyms

FLA10; KLP-20; KIF3A

Product Information

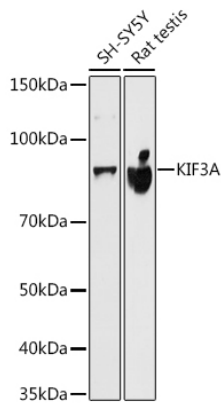
Source	Isotype	Purification
Rabbit	IgG	Affinity purification

Storage

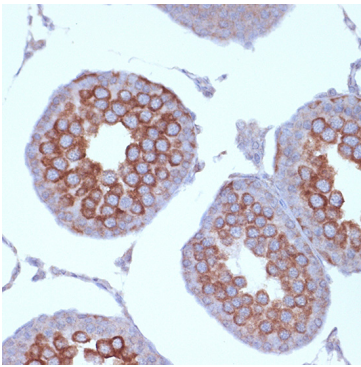
Store at -20°C. Avoid freeze / thaw cycles.

Buffer: PBS with 0.02% sodium azide,0.05% BSA,50% glycerol,pH7.3.

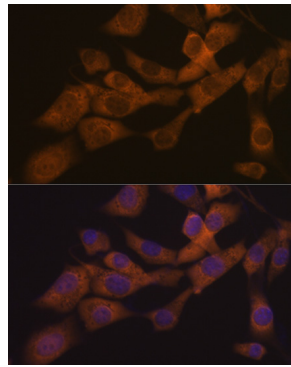
Validation Data



Western blot analysis of various lysates using KIF3A Rabbit mAb (A7370) at 1:500 dilution.
Secondary antibody: HRP-conjugated Goat anti-Rabbit IgG (H+L) (AS014) at 1:10000 dilution.
Lysates/proteins: 25µg per lane.
Blocking buffer: 3% nonfat dry milk in TBST.
Detection: ECL Basic Kit (RM00020).
Exposure time: 10s.



Immunohistochemistry analysis of paraffin-embedded Rat testis using KIF3A Rabbit mAb (A7370) at dilution of 1:100 (40x lens). Microwave antigen retrieval performed with 0.01M Tris/EDTA Buffer (pH 9.0) prior to IHC staining.



Immunofluorescence analysis of NIH-3T3 cells using KIF3A Rabbit mAb (A7370) at dilution of 1:100 (40x lens). Secondary antibody: Cy3-conjugated Goat anti-Rabbit IgG (H+L) (AS007) at 1:500 dilution. Blue: DAPI for nuclear staining.