

A7289

Leader in Biomolecular Solutions for Life Science



L3MBTL3 Rabbit pAb

Catalog No.: A7289

Basic Information

Observed MW

100kDa

Calculated MW

88kDa

Category

Polyclonal Antibody

Applications

WB,IHC-P,IF/ICC,ELISA

Cross-Reactivity

Human,Mouse

Background

This gene encodes a member of the malignant brain tumor (MBT) family of chromatin interacting transcriptional repressors. Members of this family function as methyl-lysine readers, which recognize methylated lysine residues on histone protein tails, and are associated with the repression of gene expression. The encoded protein may regulate hematopoiesis. Homozygous deletion of this gene has been observed in human patients with medulloblastoma.

Recommended Dilutions

WB 1:2000 - 1:4000

IHC-P 1:50 - 1:200

IF/ICC 1:50 - 1:200

Immunogen Information

Gene ID

84456

Swiss Prot

Q96JM7

Immunogen

Recombinant fusion protein containing a sequence corresponding to amino acids 1-255 of human L3MBTL3 (NP_115814.1).

Synonyms

MBT1; MBT-1; L3MBTL3

Contact

 www.abclonal.com

Product Information

Source

Rabbit

Isotype

IgG

Purification

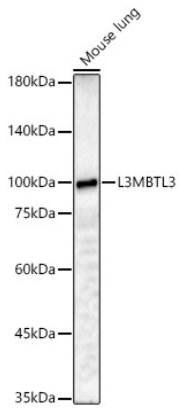
Affinity purification

Storage

Store at -20°C. Avoid freeze / thaw cycles.

Buffer: PBS with 0.05% proclin300,50% glycerol,pH7.3.

Validation Data



Western blot analysis of lysates from Mouse lung, using L3MBTL3 Rabbit pAb (A7289) at 1:4000 dilution.

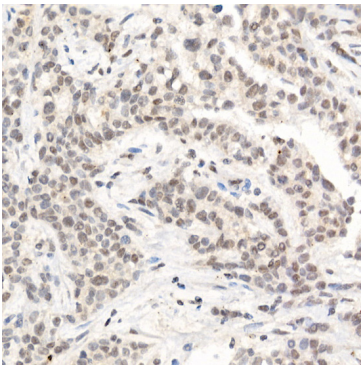
Secondary antibody: HRP Goat Anti-Rabbit IgG (H+L) (AS014) at 1:10000 dilution.

Lysates/proteins: 25µg per lane.

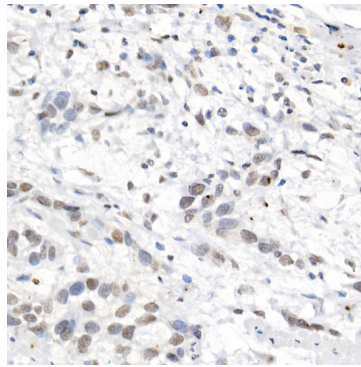
Blocking buffer: 3% nonfat dry milk in TBST.

Detection: ECL Basic Kit (RM00020).

Exposure time: 180s.



Immunohistochemistry analysis of paraffin-embedded Human breast cancer using L3MBTL3 Rabbit pAb (A7289) at dilution of 1:50 (40x lens). Perform high pressure antigen retrieval with 10 mM citrate buffer pH 6.0 before commencing with IHC staining protocol.



Immunohistochemistry analysis of paraffin-embedded Human esophageal cancer using L3MBTL3 Rabbit pAb (A7289) at dilution of 1:50 (40x lens). Perform high pressure antigen retrieval with 10 mM citrate buffer pH 6.0 before commencing with IHC staining protocol.