

A7280

Leader in Biomolecular Solutions for Life Science



## DCD Rabbit pAb

Catalog No.: A7280

### Basic Information

---

**Observed MW**

18kDa

**Calculated MW**

11kDa

**Category**

Polyclonal Antibody

**Applications**

WB,ELISA

**Cross-Reactivity**

Human,Mouse

### Background

---

This antimicrobial gene encodes a secreted protein that is subsequently processed into mature peptides of distinct biological activities. The C-terminal peptide is constitutively expressed in sweat and has antibacterial and antifungal activities. The N-terminal peptide, also known as diffusible survival evasion peptide, promotes neural cell survival under conditions of severe oxidative stress. A glycosylated form of the N-terminal peptide may be associated with cachexia (muscle wasting) in cancer patients. Alternative splicing results in multiple transcript variants encoding different isoforms.

### Recommended Dilutions

---

WB 1:2000 - 1:9000

### Immunogen Information

---

**Gene ID**

117159

**Swiss Prot**

P81605

**Immunogen**

Recombinant fusion protein containing a sequence corresponding to amino acids 20-110 of human DCD (NP\_444513.1).

**Synonyms**

PIF; AIDD; DSEP; HCAP; DCD-1; DCD

### Contact

---

 [www.abclonal.com](http://www.abclonal.com)

### Product Information

---

**Source**

Rabbit

**Isotype**

IgG

**Purification**

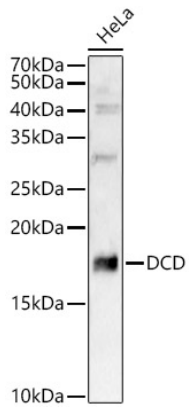
Affinity purification

**Storage**

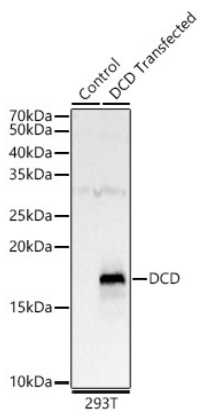
Store at -20°C. Avoid freeze / thaw cycles.

Buffer: PBS with 0.02% sodium azide,50% glycerol,pH7.3.

## Validation Data



Western blot analysis of HeLa, using DCD antibody (A7280) at 1:8000 dilution.  
Secondary antibody: HRP Goat Anti-Rabbit IgG (H+L) (AS014) at 1:10000 dilution.  
Lysates/proteins: 25µg per lane.  
Blocking buffer: 3% nonfat dry milk in TBST.  
Detection: ECL Basic Kit (RM00020).  
Exposure time: 90s.



Western blot analysis of 293T, using DCD antibody (A7280) at 1:8000 dilution.  
Secondary antibody: HRP Goat Anti-Rabbit IgG (H+L) (AS014) at 1:10000 dilution.  
Lysates/proteins: 25µg per lane.  
Blocking buffer: 3% nonfat dry milk in TBST.  
Detection: ECL Basic Kit (RM00020).  
Exposure time: 90s.