

A7272

Leader in Biomolecular Solutions for Life Science



## ATMIN Rabbit pAb

Catalog No.: A7272

### Basic Information

**Observed MW**

68-88kDa

**Calculated MW**

88kDa

**Category**

Polyclonal Antibody

**Applications**

WB,IF/ICC,ELISA

**Cross-Reactivity**

Human,Mouse,Rat

### Background

Enables dynein complex binding activity. Involved in positive regulation of transcription, DNA-templated. Located in nuclear body.

### Recommended Dilutions

<b>WB</b>	1:500 - 1:2000
<b>IF/ICC</b>	1:50 - 1:100

### Immunogen Information

**Gene ID**

23300

**Swiss Prot**

O43313

**Immunogen**

Recombinant fusion protein containing a sequence corresponding to amino acids 160-360 of human ATMIN (NP\_056066.2).

**Synonyms**

ASCIZ; ZNF822; ATMIN

### Contact



[www.abclonal.com](http://www.abclonal.com)

### Product Information

**Source**

Rabbit

**Isotype**

IgG

**Purification**

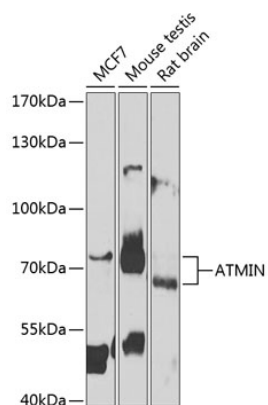
Affinity purification

**Storage**

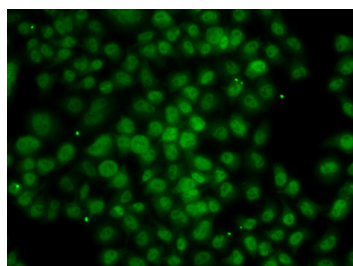
Store at -20°C. Avoid freeze / thaw cycles.

Buffer: PBS with 0.02% sodium azide,50% glycerol,pH7.3.

## Validation Data



Western blot analysis of extracts of various cell lines, using ATMIN antibody (A7272) at 1:1000 dilution. Secondary antibody: HRP Goat Anti-Rabbit IgG (H+L) (AS014) at 1:10000 dilution. Lysates/proteins: 25µg per lane. Blocking buffer: 3% nonfat dry milk in TBST. Detection: ECL Enhanced Kit (RM00021). Exposure time: 90s.



Immunofluorescence analysis of MCF-7 cells using ATMIN antibody (A7272).