

A7227

Leader in Biomolecular Solutions for Life Science



MOV10 Rabbit mAb

Catalog No.: A7227

Recombinant

1 Publications

Basic Information

Observed MW

114kDa

Calculated MW

114kDa

Category

SMab Recombinant Monoclonal
Antibody

Applications

WB,ELISA

Cross-Reactivity

Human,Mouse,Rat

CloneNo number

ARC1817

Background

Enables 5'-3' RNA helicase activity and RNA binding activity. Involved in defense response to virus; negative regulation of transposition, RNA-mediated; and posttranscriptional regulation of gene expression. Located in P-body and cytosol. Implicated in hypertension.

Recommended Dilutions

WB 1:1000 - 1:2000

ELISA Recommended starting concentration is 1 µg/mL. Please optimize the concentration based on your specific assay requirements.

Immunogen Information

Gene ID

4343

Swiss Prot

Q9HCE1

Immunogen

A synthetic peptide corresponding to a sequence within amino acids 800-900 of human MOV10 (Q9HCE1).

Synonyms

gb110; fSAP113; MOV10

Contact

 www.abclonal.com

Product Information

Source

Rabbit

Isotype

IgG

Purification

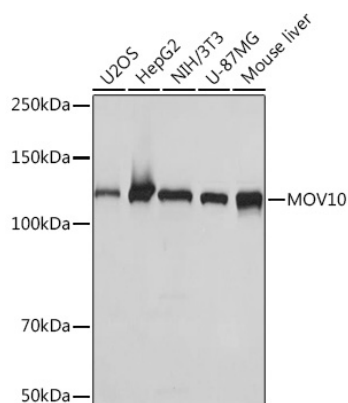
Affinity purification

Storage

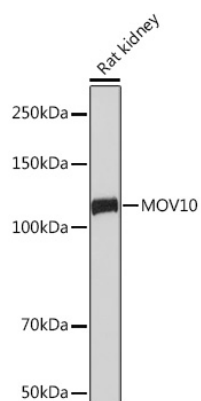
Store at -20°C. Avoid freeze / thaw cycles.

Buffer: PBS with 0.02% sodium azide,0.05% BSA,50% glycerol,pH7.3.

Validation Data



Western blot analysis of various lysates using MOV10 Rabbit mAb (A7227) at 1:1000 dilution.
Secondary antibody: HRP-conjugated Goat anti-Rabbit IgG (H+L) (AS014) at 1:10000 dilution.
Lysates/proteins: 25µg per lane.
Blocking buffer: 3% nonfat dry milk in TBST.
Detection: ECL Basic Kit (RM00020).
Exposure time: 1s.



Western blot analysis of lysates from Rat kidney, using MOV10 Rabbit mAb (A7227) at 1:1000 dilution.
Secondary antibody: HRP-conjugated Goat anti-Rabbit IgG (H+L) (AS014) at 1:10000 dilution.
Lysates/proteins: 25µg per lane.
Blocking buffer: 3% nonfat dry milk in TBST.
Detection: ECL Basic Kit (RM00020).
Exposure time: 60s.