

A7226

Leader in Biomolecular Solutions for Life Science



ZDHHC16 Rabbit pAb

Catalog No.: A7226

Basic Information

Observed MW

44kDa

Calculated MW

44kDa

Category

Polyclonal Antibody

Applications

WB,ELISA

Cross-Reactivity

Human,Mouse,Rat

Background

Enables palmitoyltransferase activity. Involved in protein palmitoylation. Predicted to be located in endoplasmic reticulum membrane. Predicted to be integral component of membrane. Predicted to be active in Golgi apparatus.

Recommended Dilutions

WB 1:500 - 1:2000

ELISA Recommended starting concentration is 1 µg/mL. Please optimize the concentration based on your specific assay requirements.

Immunogen Information

Gene ID

84287

Swiss Prot

Q969W1

Immunogen

Recombinant protein (or fragment). This information is considered to be commercially sensitive.

Synonyms

APH2; DHHC-16; ZDHHC16

Contact

 www.abclonal.com

Product Information

Source

Rabbit

Isotype

IgG

Purification

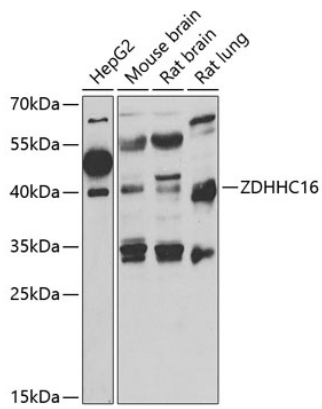
Affinity purification

Storage

Store at -20°C. Avoid freeze / thaw cycles.

Buffer: PBS with 0.02% sodium azide, 50% glycerol, pH7.3.

Validation Data



Western blot analysis of various lysates using ZDHHC16 Rabbit pAb (A7226) at 1:1000 dilution.

Secondary antibody: HRP-conjugated Goat anti-Rabbit IgG (H+L) (AS014) at 1:10000 dilution.

Lysates/proteins: 25 μ g per lane.

Blocking buffer: 3% nonfat dry milk in TBST.

Detection: ECL Basic Kit (RM00020).

Exposure time: 90s.