

A7218

Leader in Biomolecular Solutions for Life Science



SYCE1 Rabbit pAb

Catalog No.: A7218

Basic Information

Observed MW

40kDa

Calculated MW

40kDa

Category

Polyclonal Antibody

Applications

WB,ELISA

Cross-Reactivity

Human,Mouse,Rat

Background

This gene encodes a member of the synaptonemal complex, which links homologous chromosomes during prophase I of meiosis. The tripartite structure of the complex is highly conserved amongst metazoans. It consists of two lateral elements and a central region formed by transverse elements and a central element. The protein encoded by this gene localizes to the central element and is required for initiation and elongation of the synapsis. Allelic variants of this gene have been associated with premature ovarian failure and spermatogenic failure. Alternative splicing results in multiple transcript variants.

Recommended Dilutions

WB 1:500 - 1:1000

Immunogen Information

Gene ID

93426

Swiss Prot

Q8N0S2

Immunogen

Recombinant fusion protein containing a sequence corresponding to amino acids 132-351 of human SYCE1 (NP_001137236.1).

Synonyms

CT76; POF12; SPGF15; C10orf94; SYCE1

Contact

 www.abclonal.com

Product Information

Source

Rabbit

Isotype

IgG

Purification

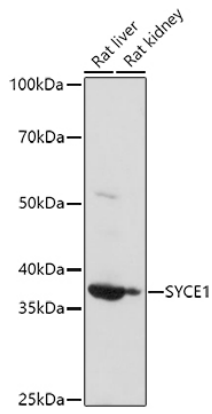
Affinity purification

Storage

Store at -20°C. Avoid freeze / thaw cycles.

Buffer: PBS with 0.02% sodium azide,50% glycerol,pH7.3.

Validation Data



Western blot analysis of extracts of various cell lines, using (A7218) at 1:1000 dilution.
Secondary antibody: HRP Goat Anti-Rabbit IgG (H+L) (AS014) at 1:10000 dilution.
Lysates/proteins: 25µg per lane.
Blocking buffer: 3% nonfat dry milk in TBST.
Detection: ECL Basic Kit (RM00020).
Exposure time: 30s.