

A7216

Leader in Biomolecular Solutions for Life Science



# SNRPD1 Rabbit pAb

Catalog No.: A7216

## Basic Information

### Observed MW

### Calculated MW

13kDa

### Category

Polyclonal Antibody

### Applications

IF/ICC,ELISA

### Cross-Reactivity

Human

## Background

This gene encodes a small nuclear ribonucleoprotein that belongs to the SNRNP core protein family. The protein may act as a charged protein scaffold to promote SNRNP assembly or strengthen SNRNP-SNRNP interactions through nonspecific electrostatic contacts with RNA. Two transcript variants encoding different isoforms have been found for this gene.

## Recommended Dilutions

IF/ICC 1:50 - 1:100

## Immunogen Information

### Gene ID

6632

### Swiss Prot

P62314

### Immunogen

Recombinant fusion protein containing a sequence corresponding to amino acids 1-119 of human SNRPD1 (NP\_008869.1).

### Synonyms

SMD1; SNRPD; Sm-D1; HsT2456; SNRPD1

## Contact



[www.abclonal.com](http://www.abclonal.com)

## Product Information

### Source

Rabbit

### Isotype

IgG

### Purification

Affinity purification

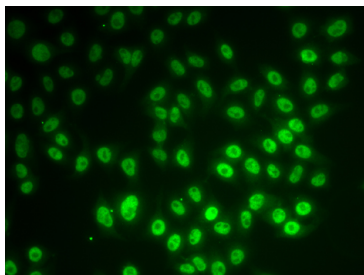
### Storage

Store at -20°C. Avoid freeze / thaw cycles.

Buffer: PBS with 0.02% sodium azide,50% glycerol,pH7.3.

## Validation Data

---



Immunofluorescence analysis of MCF-7 cells using SNRPD1 Rabbit pAb (A7216).Secondary antibody: Cy3 Goat Anti-Rabbit IgG (H+L) (AS007) at 1:500 dilution.