

A7213

Leader in Biomolecular Solutions for Life Science



## SLK Rabbit pAb

Catalog No.: A7213

### Basic Information

#### Observed MW

250kDa

#### Calculated MW

143kDa

#### Category

Polyclonal Antibody

#### Applications

WB,ELISA

#### Cross-Reactivity

Human,Mouse,Rat

### Background

Enables protein homodimerization activity and protein serine/threonine kinase activity. Involved in several processes, including cytoplasmic microtubule organization; protein autophosphorylation; and regulation of focal adhesion assembly. Located in perinuclear region of cytoplasm.

### Recommended Dilutions

**WB** 1:500 - 1:2000

**ELISA** Recommended starting concentration is 1 µg/mL. Please optimize the concentration based on your specific assay requirements.

### Immunogen Information

#### Gene ID

9748

#### Swiss Prot

Q9H2G2

#### Immunogen

Recombinant protein (or fragment). This information is considered to be commercially sensitive.

#### Synonyms

LOSK; STK2; se20-9; bA16H23.1; SLK

### Contact



[www.abclonal.com](http://www.abclonal.com)

### Product Information

#### Source

Rabbit

#### Isotype

IgG

#### Purification

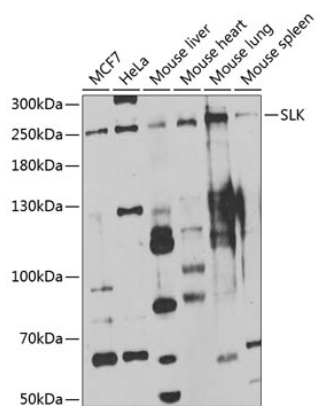
Affinity purification

#### Storage

Store at -20°C. Avoid freeze / thaw cycles.

Buffer: PBS with 0.02% sodium azide, 50% glycerol, pH7.3.

## Validation Data



Western blot analysis of various lysates using SLK Rabbit pAb (A7213) at 1:1000 dilution.

Secondary antibody: HRP-conjugated Goat anti-Rabbit IgG (H+L) (AS014) at 1:10000 dilution.

Lysates/proteins: 25µg per lane.

Blocking buffer: 3% nonfat dry milk in TBST.

Detection: ECL Enhanced Kit (RM00021).

Exposure time: 90s.