

A7198

Leader in Biomolecular Solutions for Life Science



# [KD Validated] LC3B Rabbit pAb

Catalog No.: A7198 **40 Publications**

## Basic Information

### Observed MW

14kDa/16kDa

### Calculated MW

15kDa

### Category

Polyclonal Antibody

### Applications

WB,IHC-P,IF/ICC,ELISA

### Cross-Reactivity

Human,Mouse,Rat

## Background

The product of this gene is a subunit of neuronal microtubule-associated MAP1A and MAP1B proteins, which are involved in microtubule assembly and important for neurogenesis. Studies on the rat homolog implicate a role for this gene in autophagy, a process that involves the bulk degradation of cytoplasmic component.

## Recommended Dilutions

**WB** 1:500 - 1:1000

**IHC-P** 1:50 - 1:200

**IF/ICC** 1:50 - 1:200

## Immunogen Information

### Gene ID

81631

### Swiss Prot

Q9GZQ8

### Immunogen

A synthetic peptide corresponding to a sequence within amino acids 1-100 of human LC3B (NP\_073729.1).

### Synonyms

LC3B; ATG8F; MAP1LC3B-a; MAP1A/1BLC3; 3B

## Contact

 [www.abclonal.com](http://www.abclonal.com)

## Product Information

### Source

Rabbit

### Isotype

IgG

### Purification

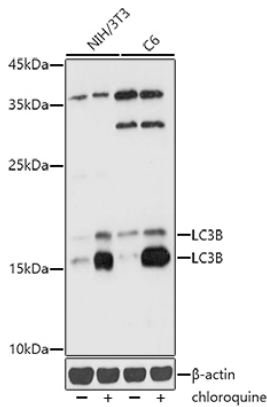
Affinity purification

### Storage

Store at -20°C. Avoid freeze / thaw cycles.

Buffer: PBS with 0.09% Sodium azide,50% glycerol,pH7.3.

## Validation Data



Western blot analysis of various lysates using [KD Validated] LC3B Rabbit pAb (A7198) at 1:1000 dilution. NIH/3T3 and C6 cells were treated by Chloroquine (50  $\mu$ M) at 37°C for 20 hours.

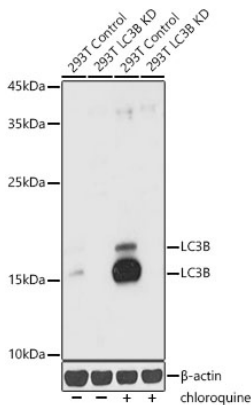
Secondary antibody: HRP Goat Anti-Rabbit IgG (H+L) (AS014) at 1:10000 dilution.

Lysates/proteins: 25 $\mu$ g per lane.

Blocking buffer: 3% nonfat dry milk in TBST.

Detection: ECL Basic Kit (RM00020).

Exposure time: 1s.



Western blot analysis of lysates from wild type (WT) and LC3B knockdown (KD) 293T, 293T+chloroquine cells, using [KD Validated] LC3B Rabbit pAb (A7198) at 1:1000 dilution. 293T cells were treated by Chloroquine (50  $\mu$ M) at 37°C for 20 hours.

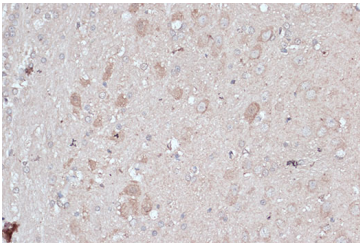
Secondary antibody: HRP Goat Anti-Rabbit IgG (H+L) (AS014) at 1:10000 dilution.

Lysates/proteins: 25 $\mu$ g per lane.

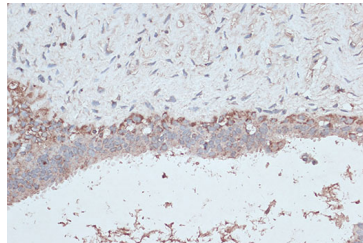
Blocking buffer: 3% nonfat dry milk in TBST.

Detection: ECL Basic Kit (RM00020).

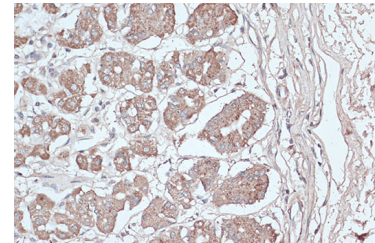
Exposure time: 10s.



Immunohistochemistry analysis of paraffin-embedded Rat brain using [KD Validated] LC3B Rabbit pAb (A7198) at dilution of 1:100 (40x lens). Perform microwave antigen retrieval with 10 mM PBS buffer pH 7.2 before commencing with IHC staining protocol.



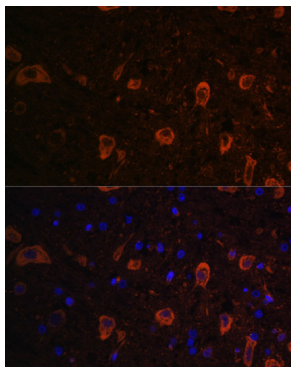
Immunohistochemistry analysis of paraffin-embedded Human breast cancer using [KD Validated] LC3B Rabbit pAb (A7198) at dilution of 1:100 (40x lens). Perform microwave antigen retrieval with 10 mM PBS buffer pH 7.2 before commencing with IHC staining protocol.



Immunohistochemistry analysis of paraffin-embedded Human stomach using [KD Validated] LC3B Rabbit pAb (A7198) at dilution of 1:100 (40x lens). Perform microwave antigen retrieval with 10 mM PBS buffer pH 7.2 before commencing with IHC staining protocol.

## Validation Data

---



Immunofluorescence analysis of paraffin-embedded rat brain using [KD Validated] LC3B Rabbit pAb (A7198) at dilution of 1:100. Secondary antibody: Cy3 Goat Anti-Rabbit IgG (H+L) (AS007) at 1:500 dilution. Blue: DAPI for nuclear staining.