

A7198

Leader in Biomolecular Solutions for Life Science



## [KD Validated] LC3B Rabbit pAb

Catalog No.: A7198 **51 Publications**

### Basic Information

#### Observed MW

14kDa/16kDa

#### Calculated MW

15kDa

#### Category

Polyclonal Antibody

#### Applications

WB,IHC-P,ELISA,IF-P

#### Cross-Reactivity

Human,Mouse,Rat

### Background

The product of this gene is a subunit of neuronal microtubule-associated MAP1A and MAP1B proteins, which are involved in microtubule assembly and important for neurogenesis. Studies on the rat homolog implicate a role for this gene in autophagy, a process that involves the bulk degradation of cytoplasmic component.

### Recommended Dilutions

**WB** 1:500 - 1:1000

**IF-P** 1:50 - 1:200

**IHC-P** 1:50 - 1:200

**ELISA** Recommended starting concentration is 1 µg/mL. Please optimize the concentration based on your specific assay requirements.

### Immunogen Information

#### Gene ID

81631

#### Swiss Prot

Q9GZQ8

#### Immunogen

Synthetic peptide. This information is considered to be commercially sensitive.

#### Synonyms

LC3B; ATG8F; MAP1LC3B-a; MAP1A/1BLC3; 3B

### Product Information

#### Source

Rabbit

#### Isotype

IgG

#### Purification

Affinity purification

#### Storage

Store at -20°C. Avoid freeze / thaw cycles.

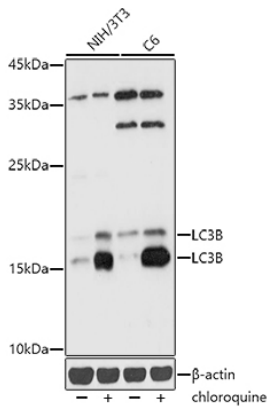
Buffer: PBS containing 50% glycerol, preserved with proclin300 or sodium azide (as specified on the Certificate of Analysis), pH 7.3.

### Contact



[www.abclonal.com](http://www.abclonal.com)

## Validation Data



Western blot analysis of various lysates using [KD Validated] LC3B Rabbit pAb (A7198) at 1:1000 dilution. NIH/3T3 and C6 cells were treated with Chloroquine (50  $\mu$ M) at 37°C for 20 hours.

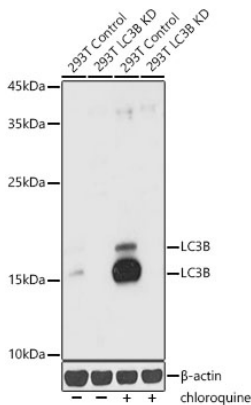
Secondary antibody: HRP-conjugated Goat anti-Rabbit IgG (H+L) (AS014) at 1:10000 dilution.

Lysates/proteins: 25 $\mu$ g per lane.

Blocking buffer: 3% nonfat dry milk in TBST.

Detection: ECL Basic Kit (RM00020).

Exposure time: 1s.



Western blot analysis of lysates from wild type (WT) and LC3B knockdown (KD)

293T, 293T+chloroquine cells, using [KD Validated] LC3B Rabbit pAb (A7198) at 1:1000 dilution. 293T cells were treated with Chloroquine (50  $\mu$ M) at 37°C for 20 hours.

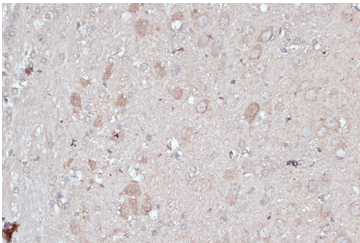
Secondary antibody: HRP-conjugated Goat anti-Rabbit IgG (H+L) (AS014) at 1:10000 dilution.

Lysates/proteins: 25 $\mu$ g per lane.

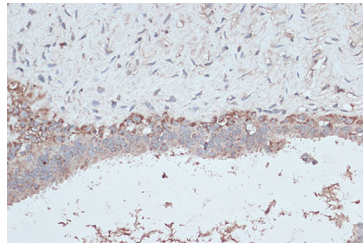
Blocking buffer: 3% nonfat dry milk in TBST.

Detection: ECL Basic Kit (RM00020).

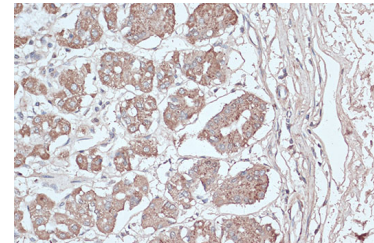
Exposure time: 10s.



Immunohistochemistry analysis of paraffin-embedded Rat brain using [KD Validated] LC3B Rabbit pAb (A7198) at dilution of 1:100 (40x lens). Microwave antigen retrieval performed with 0.01M PBS Buffer (pH 7.2) prior to IHC staining.



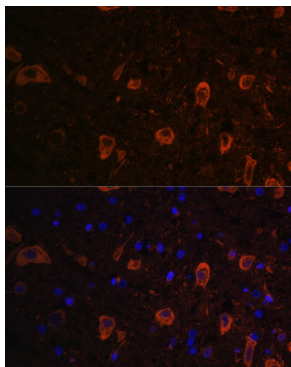
Immunohistochemistry analysis of paraffin-embedded Human breast cancer using [KD Validated] LC3B Rabbit pAb (A7198) at dilution of 1:100 (40x lens). Microwave antigen retrieval performed with 0.01M PBS Buffer (pH 7.2) prior to IHC staining.



Immunohistochemistry analysis of paraffin-embedded Human stomach using [KD Validated] LC3B Rabbit pAb (A7198) at dilution of 1:100 (40x lens). Microwave antigen retrieval performed with 0.01M PBS Buffer (pH 7.2) prior to IHC staining.

## Validation Data

---



Immunofluorescence analysis of paraffin-embedded rat brain using [KD Validated] LC3B Rabbit pAb (A7198) at dilution of 1:100.

Secondary antibody: Cy3-conjugated Goat anti-Rabbit IgG (H+L) (AS007) at 1:500 dilution. Blue: DAPI for nuclear staining.