

A7178

Leader in Biomolecular Solutions for Life Science



CUTA Rabbit pAb

Catalog No.: A7178

Basic Information

Observed MW

17kDa

Calculated MW

19kDa

Category

Polyclonal Antibody

Applications

WB,ELISA

Cross-Reactivity

Mouse

Background

Enables enzyme binding activity. Involved in protein localization. Located in membrane.

Recommended Dilutions

WB 1:500 - 1:2000

ELISA Recommended starting concentration is 1 µg/mL. Please optimize the concentration based on your specific assay requirements.

Immunogen Information

Gene ID

51596

Swiss Prot

O60888

Immunogen

Recombinant fusion protein containing a sequence corresponding to amino acids 21-156 of human CUTA (NP_001014840.1).

Synonyms

ACHAP; C6orf82; CUTA

Contact

 www.abclonal.com

Product Information

Source

Rabbit

Isotype

IgG

Purification

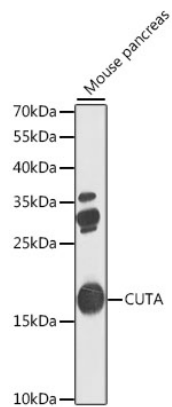
Affinity purification

Storage

Store at -20°C. Avoid freeze / thaw cycles.

Buffer: PBS with 0.02% sodium azide, 50% glycerol, pH7.3.

Validation Data



Western blot analysis of lysates from mouse pancreas, using CUTA Rabbit pAb (A7178) at 1:1000 dilution.

Secondary antibody: HRP-conjugated Goat anti-Rabbit IgG (H+L) (AS014) at 1:10000 dilution.

Lysates/proteins: 25µg per lane.

Blocking buffer: 3% nonfat dry milk in TBST.

Detection: ECL Basic Kit (RM00020).

Exposure time: 90s.