

A7152

Leader in Biomolecular Solutions for Life Science



# METTL20 Rabbit pAb

Catalog No.: A7152

## Basic Information

### Observed MW

33kDa

### Calculated MW

29kDa

### Category

Polyclonal Antibody

### Applications

WB,ELISA

### Cross-Reactivity

Mouse,Rat

## Background

Enables heat shock protein binding activity and protein-lysine N-methyltransferase activity. Involved in negative regulation of electron transfer activity; negative regulation of fatty acid beta-oxidation using acyl-CoA dehydrogenase; and peptidyl-lysine trimethylation. Located in mitochondrial matrix. Part of protein-containing complex.

## Recommended Dilutions

**WB** 1:500 - 1:2000

**ELISA** Recommended starting concentration is 1 µg/mL. Please optimize the concentration based on your specific assay requirements.

## Immunogen Information

### Gene ID

254013

### Swiss Prot

Q8IXQ9

### Immunogen

Recombinant protein (or fragment). This information is considered to be commercially sensitive.

### Synonyms

METTL20; C12orf72; ETFB-KMT

## Contact

 [www.abclonal.com](http://www.abclonal.com)

## Product Information

### Source

Rabbit

### Isotype

IgG

### Purification

Affinity purification

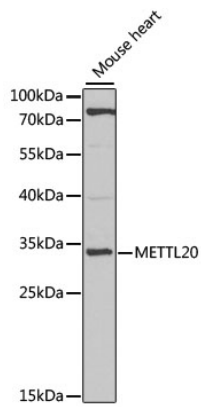
### Storage

Store at -20°C. Avoid freeze / thaw cycles.

Buffer: PBS with 0.02% sodium azide, 50% glycerol, pH7.3.

## Validation Data

---



Western blot analysis of lysates from mouse heart, using METTL20 Rabbit pAb (A7152) at 1:1000 dilution.

Secondary antibody: HRP-conjugated Goat anti-Rabbit IgG (H+L) (AS014) at 1:10000 dilution.

Lysates/proteins: 25µg per lane.

Blocking buffer: 3% nonfat dry milk in TBST.

Detection: ECL Basic Kit (RM00020).

Exposure time: 90s.